



Overhead Door OHD Anywhere Driver Release Notes

Contents

Introduction.....	1
Installing Overhead.....	1
Connecting Overhead to ClareHome.....	2
Configuring Overhead in ClareHome and FusionPro	2
Using Overhead in ClareHome app.....	9
Contact information	9

Last modified: 11/19/20

Introduction

The Overhead Door OHD Anywhere garage door opener is now supported in ClareHome. The Overhead door openers are position-aware and provide both audible and visual warnings prior to remotely activating garage door movement. This driver allows ClareHome users to control their garage door from their smartphone.

Supported models

- 1128
- 2128
- 7120
- 7130
- 8130
- 8160
- 9120

Installing Overhead

Only qualified installation technicians should install the Overhead garage door opener. Refer to the installation instructions that came with your device. Clare Controls does not assume any responsibility for damages caused by improper

installation or connection to the network. Register your device on the OHD Anywhere app before adding and configuring the device using ClareHome.

Connecting Overhead to ClareHome

Connecting Overhead to your ClareHome project requires the homeowner to create an OHD Anywhere account and register their device on the OHD Anywhere app. Once an account is created and the device registered, an installer or homeowner can authorize the devices in ClareHome.

To create an OHD Anywhere account:

1. Download and open the OHD Anywhere app.
2. Tap **SIGN UP**.
3. Fill out the form and confirm your account.
4. Follow the app's steps to add your Overhead device.

Configuring Overhead in ClareHome and FusionPro

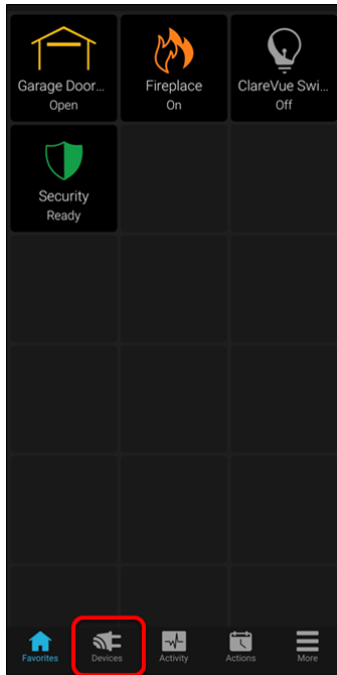
Once you have installed and setup the Overhead device using the OHD Anywhere app, add and configure it with the ClareHome app or FusionPro.

Notes

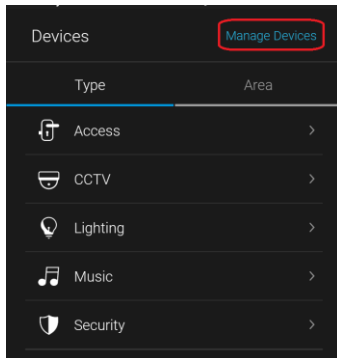
- An internet connection is required when adding an Overhead device.
- You will need the Overhead Door ODH Anywhere account's credentials.

To add an Overhead device using the ClareHome app:

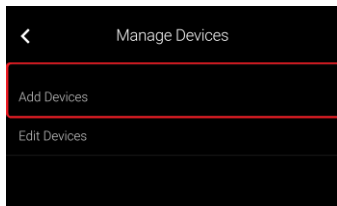
1. Tap the ClareHome app's **Devices** page.



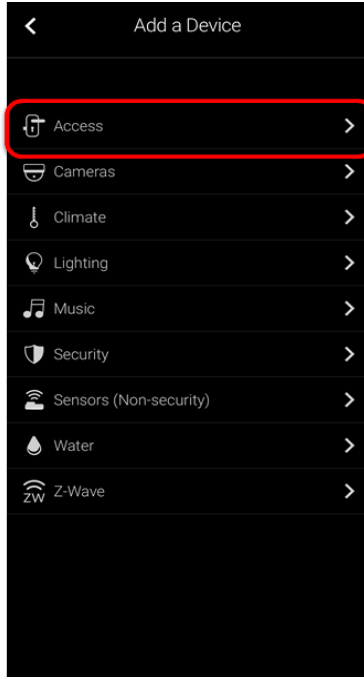
2. Tap **Manage Devices**.



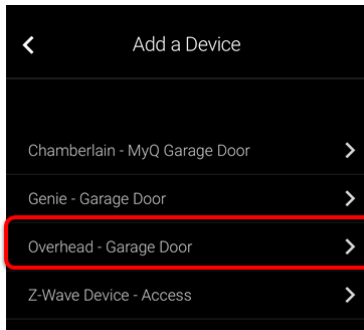
3. Tap **Add Devices**.



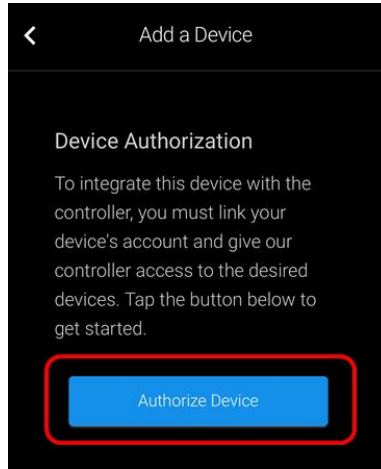
4. Select the device category, **Access**.



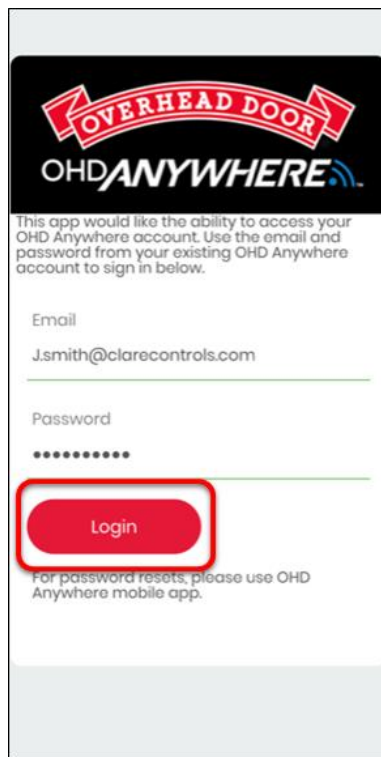
5. Select **Overhead – Garage Door**.



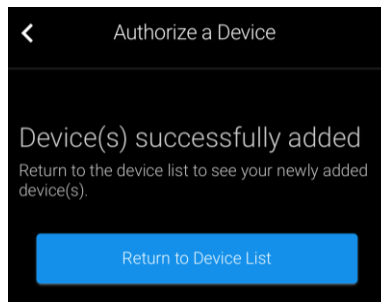
6. Read through the displayed information, and then tap **Authorize Device**.



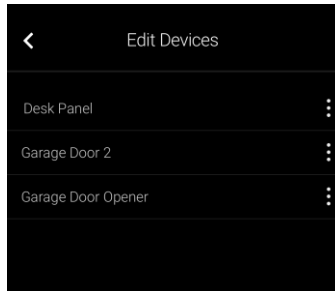
7. Enter the Overhead Door OHD Anywhere credentials, and then tap **Login**.



Once the device(s) are authorized, a success message displays.

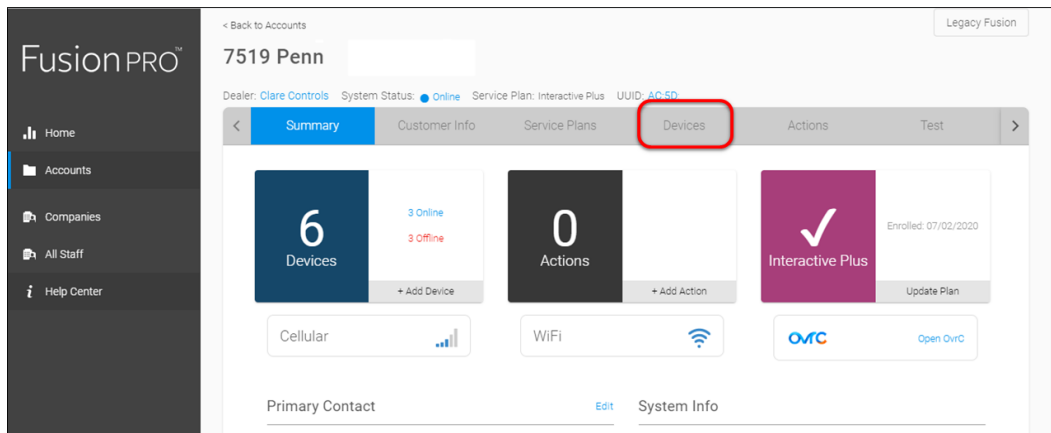


8. Tap **Return to Device List** to view the Devices list.

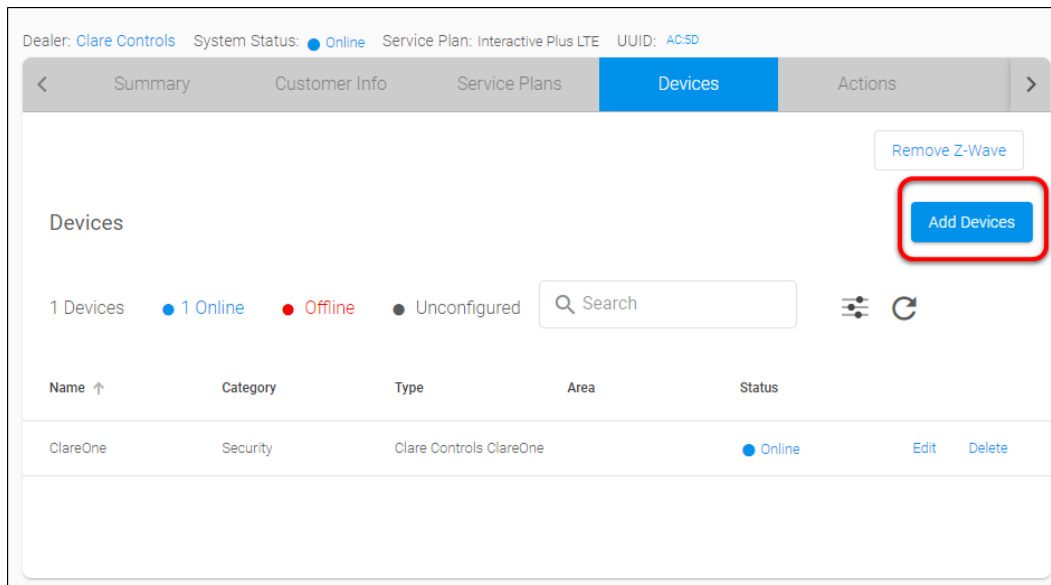


To add an Overhead device using FusionPro:

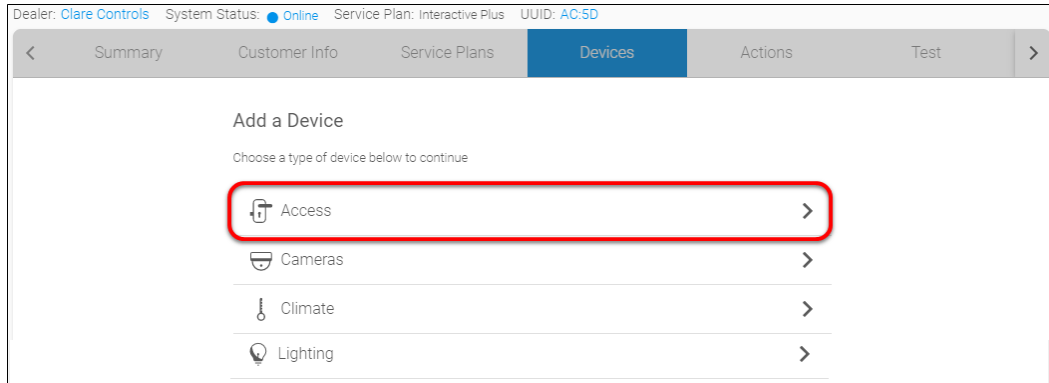
1. Access the desired account in FusionPro, and then click the **Devices** tab.



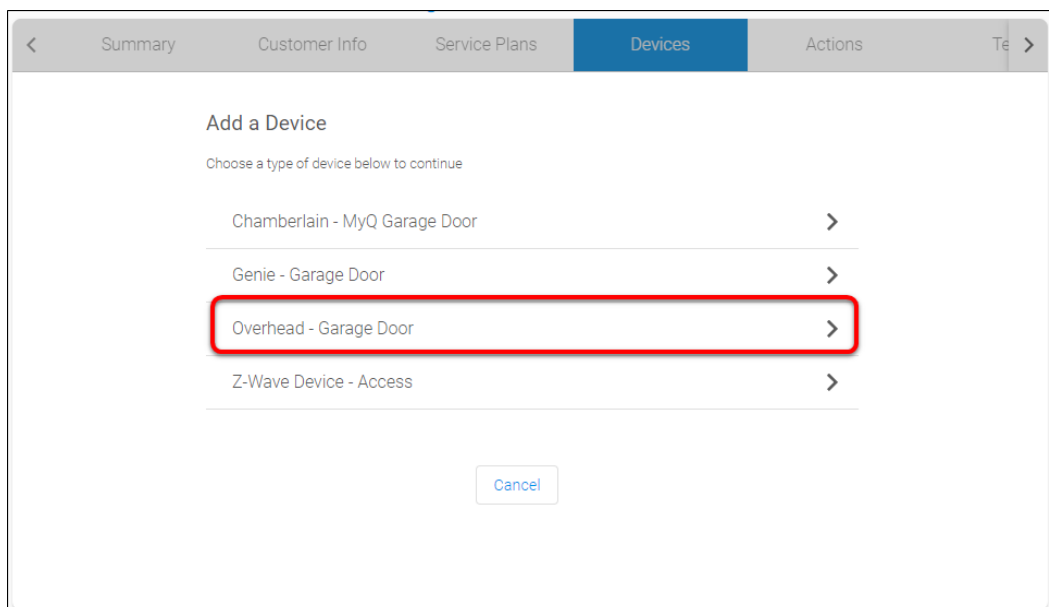
2. Click **Add Devices**.



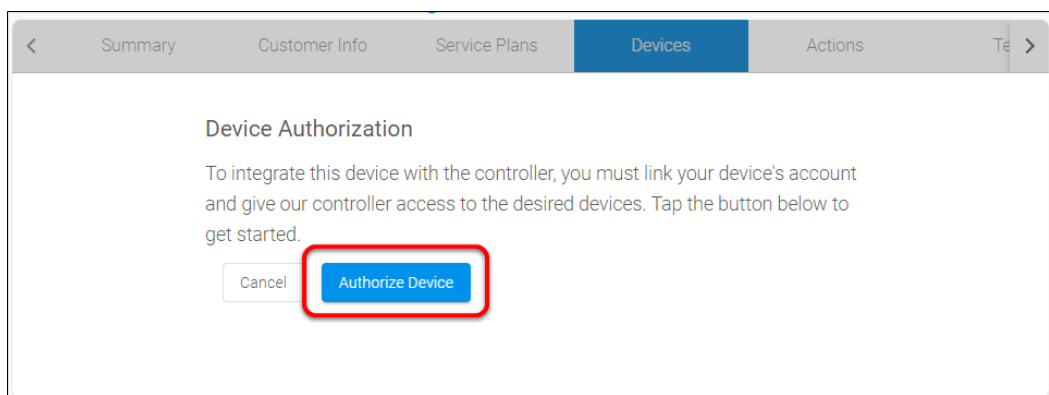
3. Select the device category, **Access**.



4. Select **Overhead – Garage Door**.

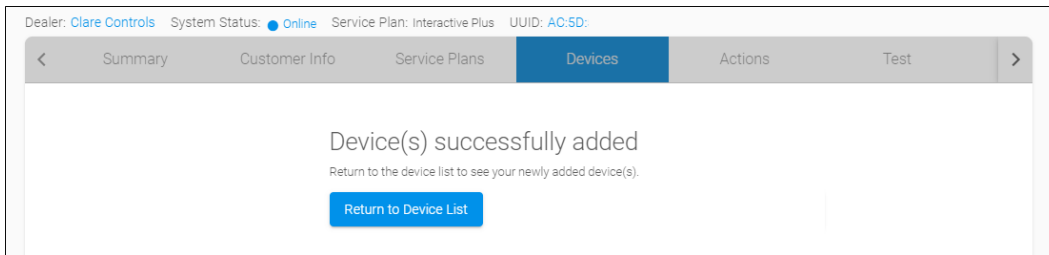


5. Then click **Authorize Device**.



6. Enter the Overhead Door OHD Anywhere credentials, and then click **Login**.

7. The device(s) are added successfully.



Click **Return to Devices List** to see the Genie devices.

Name ↑	Category	Type	Area	Status
ClareOne	Security	Clare Controls ClareOne		● Online
Garage Door 2	Access	Overhead		● Online
Garage Door Opener	Access	Overhead		● Online

Using Overhead in ClareHome app

Once added to the project, the user can add the device to their favorites page.

Figure 1: Overhead display

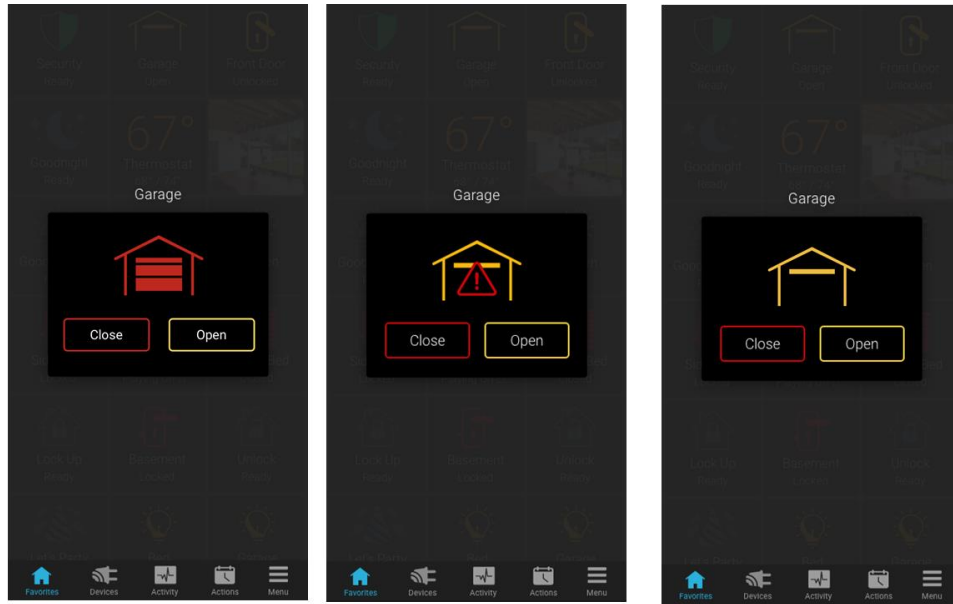





Table 1: Garage door state icons

Icon color	Garage door status
	The garage door is closed.
	The garage door status is unknown.
	The garage door is open.

Contact information

Clare Controls, LLC.
7519 Pennsylvania Ave, Suite 104
Sarasota, FL 34243
General: 941.328.3991
Fax: 941.870.9646
www.clarecontrols.com
Integrator/Dealer Support: 941.404.1072
claresupport@clarecontrols.com
Homeowner Support (ClareCare): 941.315.2273 (CARE)
help@clarecontrols.com