



Eliminate Wi-Fi Dead Zones



Smart App Control for iOS & Android Phones



Signal LED indicator



Easy Browser-Based Setup, No CD Required

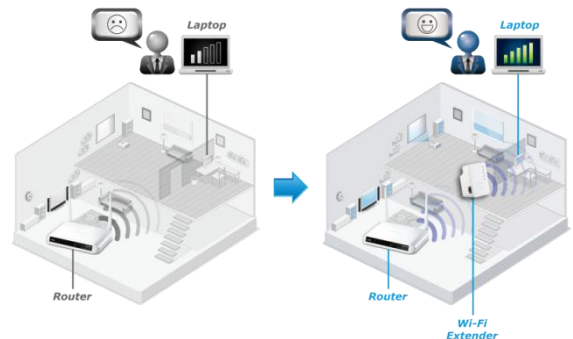
EW-7438RPn Mini

N300 Mini Wi-Fi Extender/Access Point/Wi-Fi Bridge

The Edimax EW-7438RPn Mini Wi-Fi Extender is a Wi-Fi extender with built-in power adapter in a compact design which can be plugged directly into an electrical outlet. The ES-7438RPn Mini comes with an intuitive iOS & Android smartphone companion app for controlling the Wi-Fi schedule and guest network. Convenient placement allows you to increase the signal coverage of your Wi-Fi network for better Wi-Fi quality. Featuring smart iQ Setup, installation is quick and easy and the EW-7438RPn Mini features 3-in-1 Wi-Fi extender, access point or wireless bridge operating modes. Just configure the mode you need for your network environment. Additionally, it complies with wireless 802.11b/g/n standards and provides data transmission rates of up to 300Mbps. With the Edimax EW-7438RPn Mini, you can enjoy high-speed wireless networking throughout your home without additional cabling.

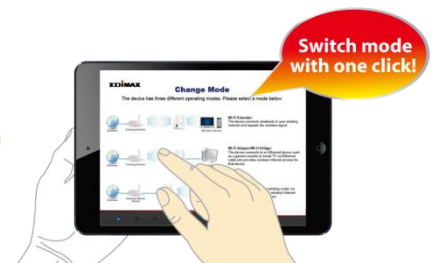
Eliminate Wi-Fi Dead Zones & Double The Wi-Fi Coverage With Ease

Plug the extender directly into an electrical outlet and the Edimax EW-7438RPn Mini can easily extend Wi-Fi coverage to dead zones which your existing Wi-Fi signal can't reach and increase the signal coverage of your Wi-Fi network for better Wi-Fi quality.



Smart 3-in-1 Extender, Access Point And Wireless Bridge

The EW-7438RPn Mini can work as Wi-Fi extender, access point or wireless bridge. Just configure the mode you need for your network environment using the smart iQ Setup wizard and enjoy surfing the web.



Smart App Control & Analytics

The extender works together with our free EdiRange smartphone app which displays your local Wi-Fi environment and provides easy-to-understand analytics. Plus you can manage the extender's wireless network and functions such as scheduling and guest network.



N300 Mini Wi-Fi Extender/Access Point/Wi-Fi Bridge

EW-7438RPn Mini

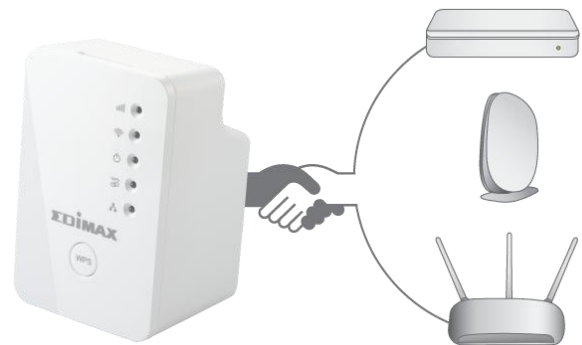
Compact, Slim Wall Plug Design

Plugs directly into an existing electrical socket – no need for an additional power cable. Not only is the Edimax EW-7438RPn Mini slim and compact, it is designed with a built-in power adapter. This allows you to plug it directly into an electrical outlet, eliminating the need for an additional power cable. You can easily install it where your Wi-Fi signal needs enhancement and enjoy high-speed wireless performance without any hassles.



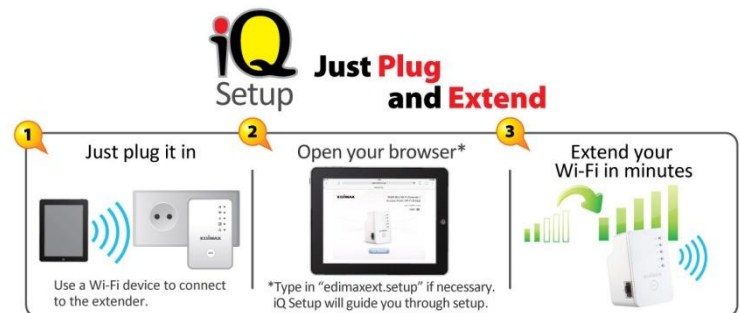
Works With Any Wireless Router

Universal compatibility and easy web-based iQ Setup for quick and easy installation.



Smart iQ Setup

Features user-friendly browser-based iQ Setup for smart, automatic and quick installation. iQ Setup automatically detects the available Wi-Fi networks nearby and helps you establish a connection within seconds.



Quick And Easy WPS Installation

A WPS (Wi-Fi Protected Setup) button allows the EW-7438RPn Mini to join an existing wireless networking at the simple push of a button.

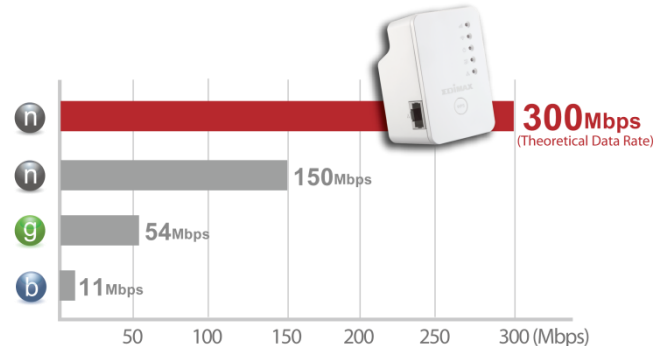


N300 Mini Wi-Fi Extender/Access Point/Wi-Fi Bridge

EW-7438RPn Mini

Wireless 802.11n Standard (Data Rates Up To 300Mbps)

802.11n technology is built into the EW-7438RPn Mini to broaden its wireless coverage and eliminate dead spots within wireless range. The EW-7438RPn Mini is also backward compatible with wireless 802.11b/g/n standards and can reach data transmission rates of up to 300Mbps when connected to wireless 802.11n devices, providing faster and more reliable wireless connections than standard 802.11b/g wireless networks.



802.11n VS 802.11b/g Data Transmission Rates

Wi-Fi Scheduling*

The Wi-Fi scheduling function lets you program intelligent schedules to manage Wi-Fi availability and power usage according to your home's routine. (*Wi-Fi extender mode only)



Guest Network*

The EW-7438RPn Mini also features a guest wireless network which could be used for visitor and keep your home Wi-Fi private and secure. (*Wi-Fi extender mode only)

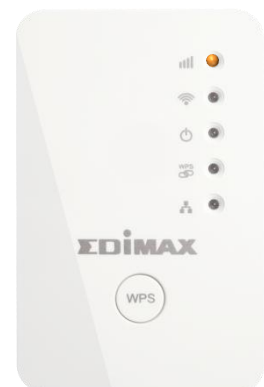


Signal Strength LED Indicator

Designed with a signal strength LED which helps you find the best setup location for optimal Wi-Fi coverage.

Signal Strength LED

- ☺ On: Excellent Signal
- 😊 Flashing: Good Signal
- 😬 Flashing Rapidly: Poor Signal
- ☹ Off: No Signal



Install the extender where the signal strength LED is on (but not flashing) for optimal Wi-Fi performance.

N300 Mini Wi-Fi Extender/Access Point/Wi-Fi Bridge

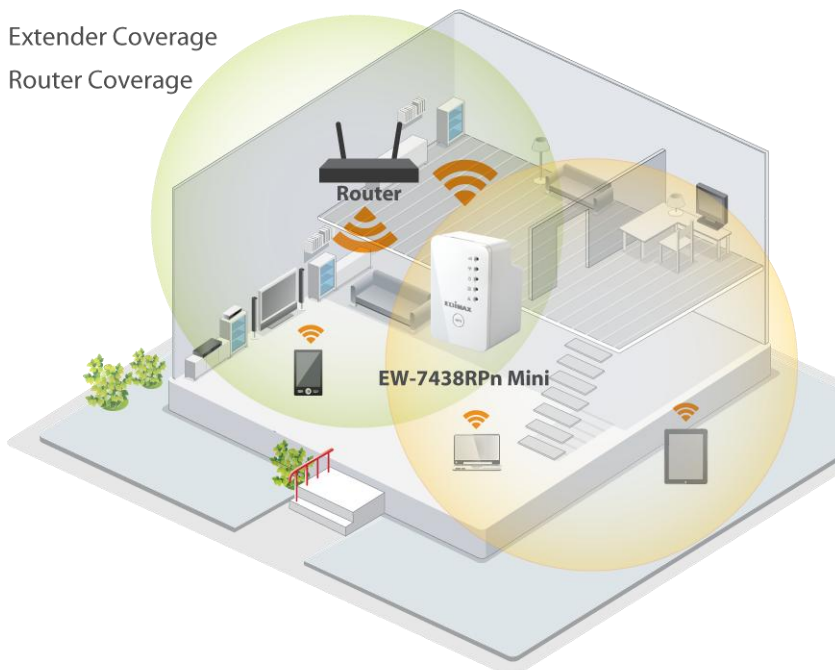
EW-7438Rp Mini

TECHNICAL SPECIFICATIONS

FREQUENCY BAND	WIRELESS STANDARDS & DATA RATES	HARDWARE INTERFACE
<ul style="list-style-type: none"> 2.4GHz 	<ul style="list-style-type: none"> IEEE 802.11n (up to 300Mbps) IEEE 802.11g (up to 54Mbps) IEEE 802.11b (up to 11Mbps) 	<ul style="list-style-type: none"> 1 x 10/100Mbps Ethernet LAN port WPS button LEDs: Signal strength, wireless, power, WPS, LAN
MANAGEMENT	SECURITY	SYSTEM REQUIREMENTS
<ul style="list-style-type: none"> 16-language user interface Firmware Upgradable 	<ul style="list-style-type: none"> 64/128-bit WEP encryption and WPA-PSK, WPA2-PSK security WPS (Wi-Fi Protected Setup) User access control (MAC address) 	<ul style="list-style-type: none"> Existing wireless home network (2.4GHz) for Range extender/ Wireless bridge mode, or Cable/DSL modem router for access point mode Computer with 2.4GHz b/g/n Wi-Fi capability and web browser for software configuration (Internet Explorer®, Google Chrome®, Firefox® or Safari® latest version) iOS 5 above or Android 4.x above for mobile app
INSTALLATION	ANTENNA	POWER ADAPTER
<ul style="list-style-type: none"> Multi-language iQ Setup (browser interface) Hardware WPS button 	<ul style="list-style-type: none"> 2 x internal antennas 	<ul style="list-style-type: none"> Built-in AC100-240V, 50-60Hz power module
HUMIDITY & TEMPERATURE	DIMENSIONS & WEIGHT	CERTIFICATIONS
<ul style="list-style-type: none"> 10-90% (Non-condensing) 0-40°C (32-104°F) 	<ul style="list-style-type: none"> 65 (H) x 42 (W) x 38 (L) mm EU Plug type: 70g UK Plug type: 72g US Plug type: 64g 	<ul style="list-style-type: none"> FCC, CE

APPLICATION DIAGRAM

- Extender Coverage
- Router Coverage



Maximum performance, actual data rates, and coverage will vary depending on network conditions and environmental factors. Product specifications and design are subject to change without notice. Copyright © 2014 Edimax Technology Co. Ltd. All rights reserved. www.edimax.com