

Understanding The ClareHome App





The ClareHome App



Available for iOS devices and Android phones, the ClareHome App puts personalized control of your smart home at your fingertips. Know when a visitor is at your front door, or get the kids ready for bed by running your goodnight scene to wind down for the night.



Arrange the devices you use most by creating your own personalized space. Each member of the family can have their own too!



Easily receive push, text, or email notifications if the status of something changes at home.



Not at home? No problem. View live status of your smart home from anywhere in the world.



Using the ClareHome App makes it simple to stay secure and safe while at home or away.

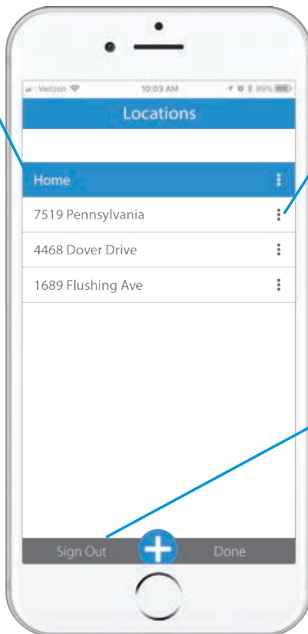


Download ClareHome for iOS devices and Android phones

Sign into the ClareHome App For the First Time

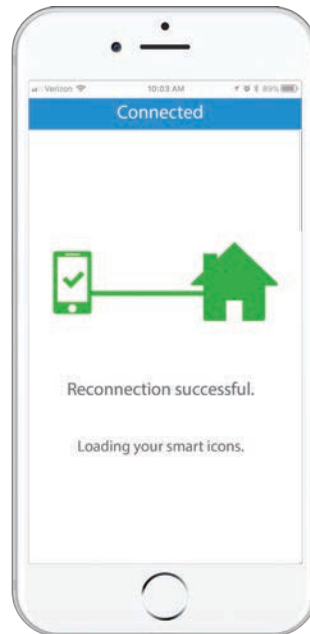
ClareHome takes advantage of a single sign on process. Easily login to anything Clare! After downloading and installing the ClareHome App, you will be required to create an account. It's easy to create an account using Facebook, Google, or your email address. Follow the on-screen instructions to create a Clare account. Next, make sure your phone is connected to the same network as your Clare smart home controller, and your ClareHome location will be automatically detected.

ClareHome automatically displays the project connected to the same network as your phone.

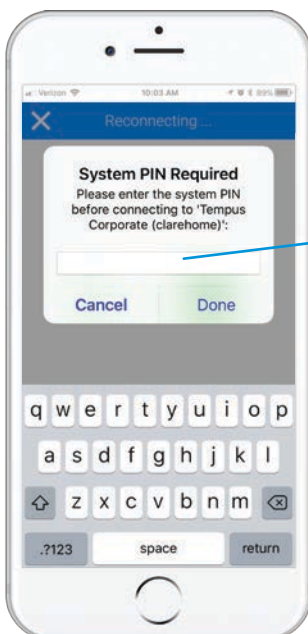


Tap the menu to remove locations from your list.

Sign Out will let you sign in as a different user.



After signing in, a connection screen will be displayed showing the status of the connection to your home's controller. Once a successful connection has been made, your smart icons will be loaded.



ClareHome supports a system PIN for enhanced security of your smart home system. By default, the PIN is 1-2-3-4. To personalize your system PIN, go to the mega menu, and select Reset PIN.

Note: Multiple ClareHome locations can be stored and accessed anytime by switching between locations in the Settings menu. From the Dashboard, tap the mega menu icon in the top left corner, select Locations, and then tap your preferred location.

The ClareHome App's Dashboard and Spaces

When the connection is made to your ClareHome system, your main dashboard will be displayed, including any smart icons in your space. Spaces can be made for anyone in the family, guests, or even give visitors temporary access to your home. Each space can include as many smart icon controls desired, and can be completely personalized for each user.

Access all of ClareHome's features through the mega menu.



Switch between users with the Spaces tab.

Tap the menu to remove Spaces from the list.



Clare Infostream keeps you informed of updates and new information.

Multiple pages of smart icons can be displayed. Simply swipe between pages to access additional controls.

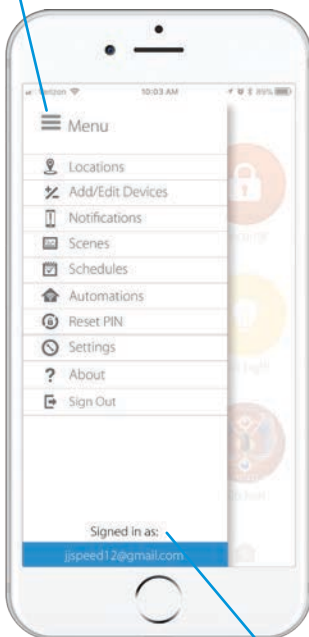
The blue highlighted row depicts the current selected user.

Note: Smart icons give you complete control over the devices installed in your home. Each smart icon features a unique set of controls to adjust smart devices installed in the home, such as security, thermostats, door locks, audio, and more.

ClareHome Main Menu, Sub Menu, and Navigation

The ClareHome App features an intuitive menu structure that gives you control over settings, installed devices, configuration of notifications, and more. Access the Main Menu by tapping on the “≡” icon in the top left corner.

Easily change your selected location, add devices, create a schedule or scene, or reset your PIN all from the mega menu icon.



Know what email address is being used to sign into the ClareHome App.



The ClareHome sub menu gives quick access to the Infostream news feed, My Devices inventory page, and the Home Activity log of events.

Notifications

Set up ClareHome to notify you via push, text, or email if something happens.

Schedules

Schedule just about anything: thermostats, lighting, security, and more!

Scenes

One-touch can adjust the thermostat, turn off lights, arm the security, and lock the door.

Automations

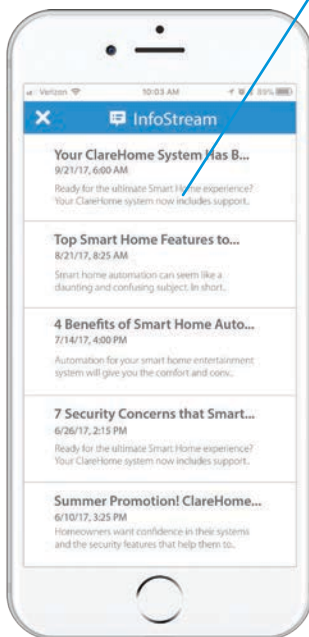
Easily configure automated actions. If my security is disarmed, turn on my lights.

More information and settings regarding notifications, schedules, scenes, and automations are outlined on the next few pages of this guide.

ClareHome InfoStream and Home Activity

Stay up to date on the latest ClareHome news, educational smart home content, and promotions via the infoStream. Access the Home Activity section of the submenu to monitor whats going on at home and review a log of security events.

Tap on any post to read the full InfoStream article.



Be sure to take a look at the InfoStream news feed to stay up to date with all things Clare.

Know when your security system is disarmed or when doors in your home are opened.



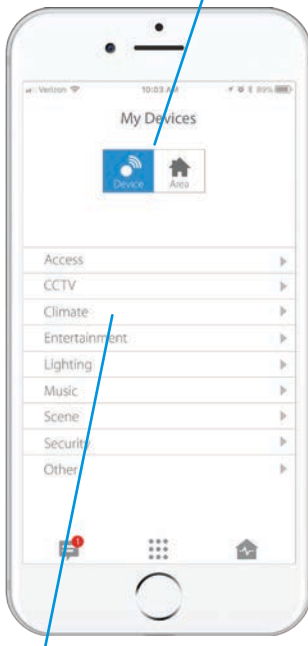
The Home Activity Log is a chronological list of stored security events. Know when your garage entry door is opened or look back a day, or a week to see what has happened with your home.

Note: We are working to expand the list of devices shown in the Home Activity Log. Be on the look-out for additional devices such as door locks, and garage doors.

Accessing My Devices and Adding Device Controls To Your Dashboard

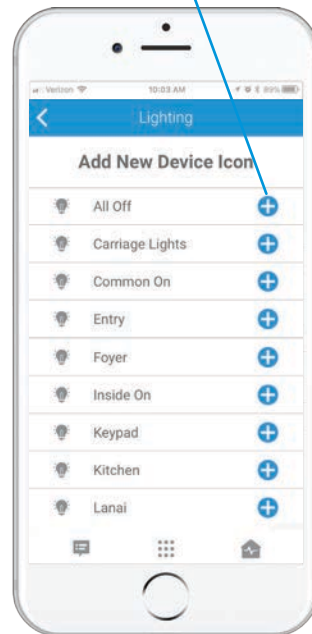
Whether you have just a few connected devices or a whole home full, ClareHome makes it easy to add them to your dashboard. For example you can add devices for a specific room or configure a space with only the controls the kids need.

Toggle between device category and device location views.



Select a category to list the available devices that are able to be controlled.

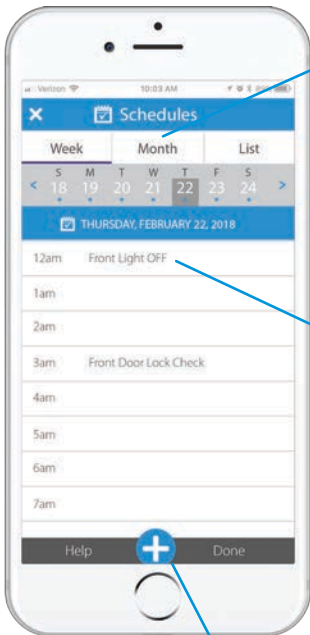
After selecting a category, tap the "+" icon to add each device you would like displayed on your dashboard.



Note: ClareHome supports up to 50 different individual spaces, all with a maximum display of up to 5 pages of controlled devices.

Configuring a Schedule

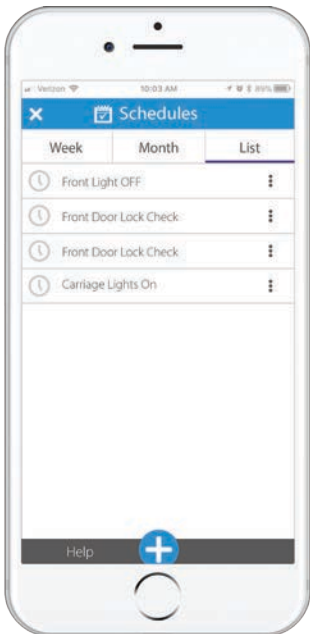
Conserve energy and worry less with ClareHome Schedules. Setup a schedule for your thermostat or turn on your carriage lights at sunset. Schedules can be set for almost anything: thermostats, lighting, security, and more!



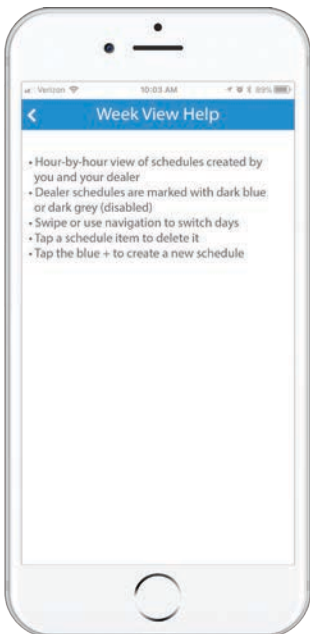
View your schedules via week, month, or list views.

Scheduled events display in chronological order.

Tap to create new schedule.



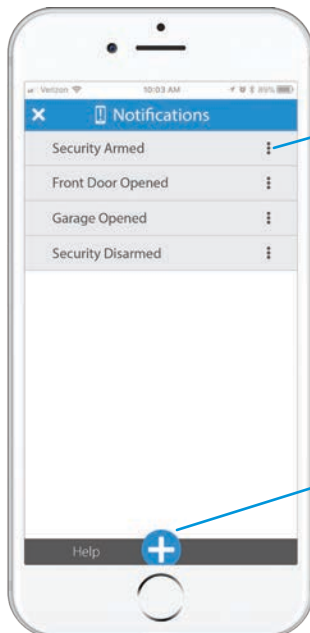
View schedules and toggle on/off when away or not needed.



Note: Anytime you need more information, simply click the "Help" icon to learn more.

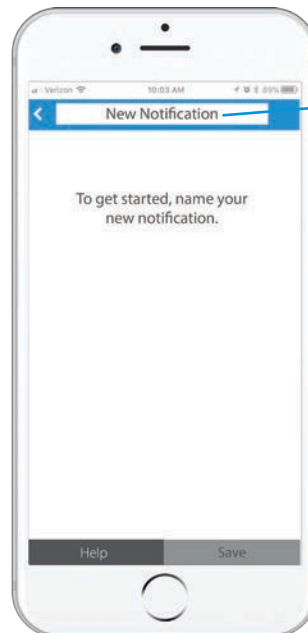
Creating a Push, Text, or Email Notification

Stay connected and aware of what's happening at home. ClareHome Notifications are easy to set up, and can notify you via text, push, or email if there is a water leak, or if the security system is going off.



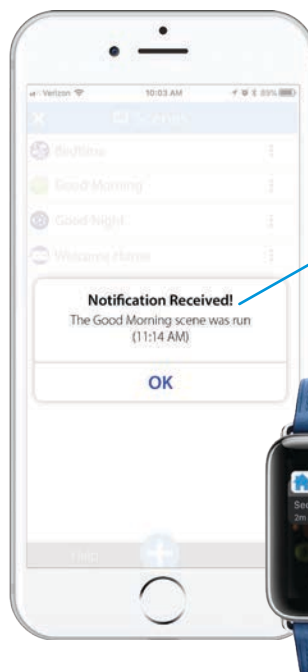
Easily enable or disable any notification or remove it entirely.

Tap to create a new notification.



Enter the name you would like to give your new notification.

Create custom notifications to alert you when a door is opened/closed or a battery level is low on your smart door locks.



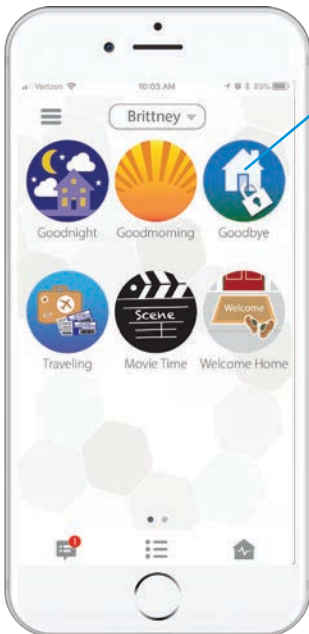
Receipt of notifications can be customized as email, text, or push.



Notifications can even be pushed to display on the Apple Watch!

Setting Up and Using a One-Touch Scene

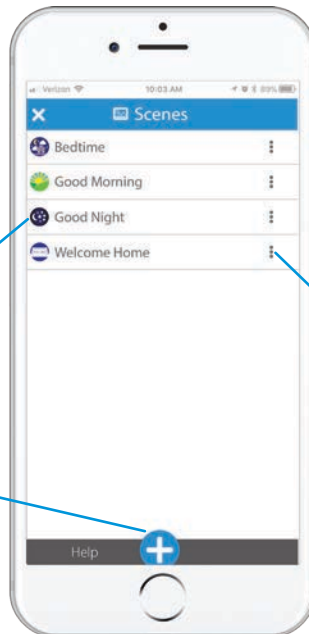
Scenes combine multiple automated actions into a single command. One button press can adjust the thermostat, turn off the lights, arm the security, and lock the door. Meet your new Goodnight Scene.



Initiate several actions at once with a tap of a scene icon.

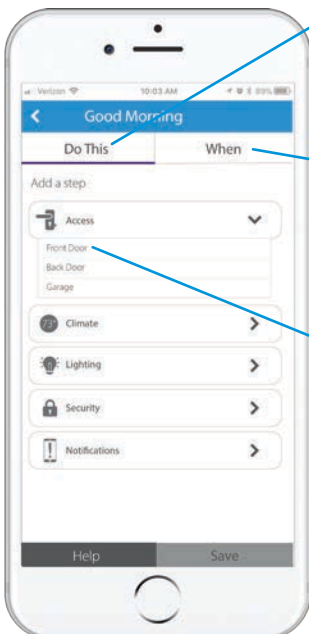
Scenes are listed in alphabetical order.

Tap to create a new custom Scene.



Tap to remove a Scene entirely.

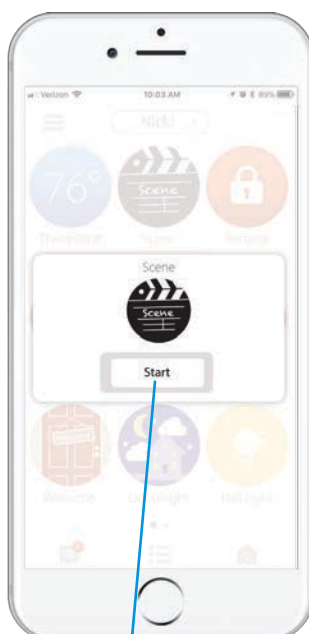
Setup Scenes for daily repetitive things, like coming home or going to bed.



First, decide what devices will be included in the scene.

Then, select a custom Scene icon to add to your dashboard.

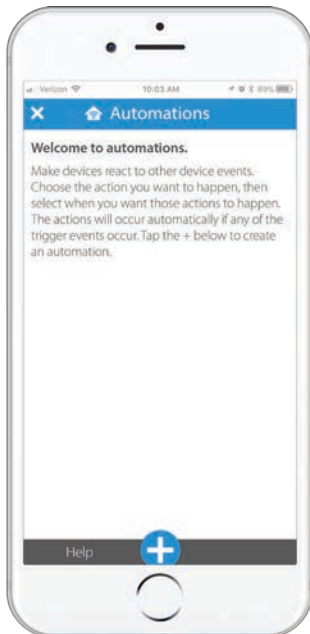
Add as many devices to your Scene as desired.



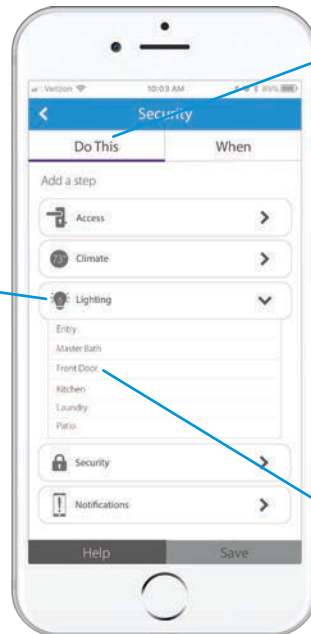
To initiate your Scene, simply tap start and let ClareHome do the rest!

Configuring Automations

Automation rules are similar to scenes, but occur automatically in response to an action. For example, when the alarm is set, the front door locks. Automations are very versatile and can help to automate additional daily routines.



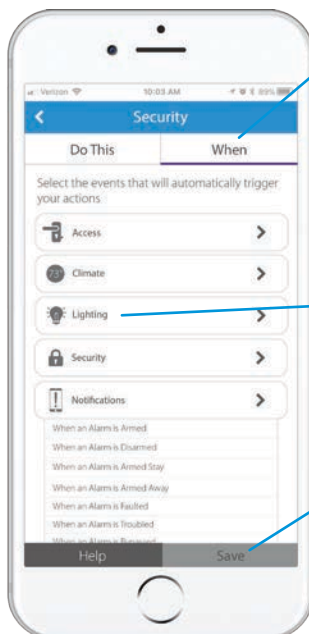
Select the category of the device you want to use to create an automation.



Choose what you want to happen.

Choose a device and then its property. For example, tap the front door light, and then tap turn on.

An automation can have multiple actions and more than one trigger. For example; when the alarm is armed, or when the door is shut, lock my front door and turn off the entry lights.



Next you will pick an action that will trigger the front door light.

Choose one or more devices to act as a trigger.

After selecting the device property that will trigger your automation, tap Save and test your new Automation.

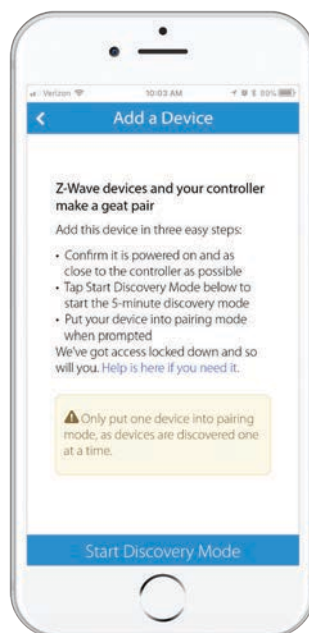
Adding Additional Devices Using ClareHome

Adding new devices to your ClareHome system is simple and quick. See below on how to add devices to your ClareHome. Some devices such as Denon HEOS and ClareVision cameras are auto-discovered and do not require any additional setup within the ClareHome App!

1. If an area has previously been created, simply select the appropriate location for your new device.
2. Name your device



Easily add any devices from these categories. Follow the on-screen instructions to pair and add your new device. It's that easy!



3. If an area for your new device does not already exist, create a new one by tapping Add Area.
4. Some devices "pair" through a discovery process. Tap Start Discovery Mode and follow the on-screen instructions to pair your new device.

Note: We are working to expand the list of devices that can be added in ClareHome. Be on the look-out for additional devices that can be setup through the App.



"Alexa, turn on living room lights." Add Amazon Echo to your ClareHome system to experience true voice-activation of your smart home devices!



Using Amazon Echo and the voice dictation from Alexa, easily control your Clare smart home without opening your phone or lifting a finger!



Alexa + ClareHome uses voice dictation to control lights, locks, and thermostats.



Alexa can also run all of your favorite ClareHome Scenes. Easily start your Good Morning or Movie Time Scenes by just telling Alexa.



Want Alexa to control your security system, audio, or TVs? Incorporate additional devices into a custom Scene for ultimate control.

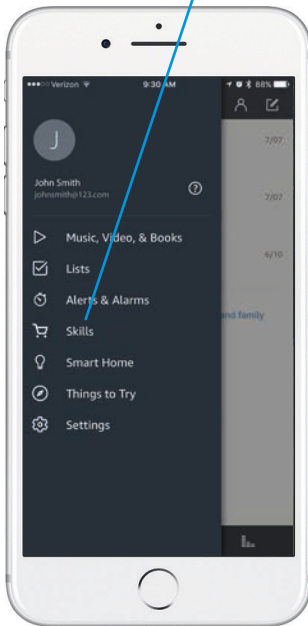


Download ClareHome and Amazon Alexa Apps for
iOS devices and Android phones

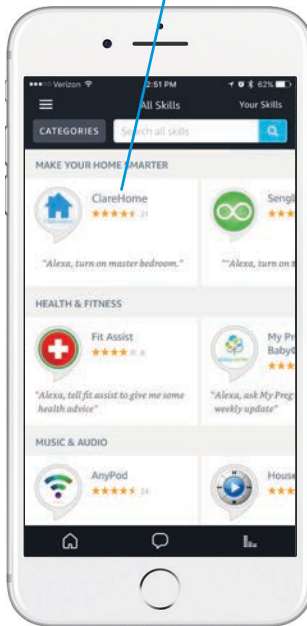
Downloading The Alexa App and Enabling the ClareHome Skill

Getting started with Alexa and ClareHome is simple and only takes a moment. Simply download the Amazon Alexa App, tap on Skills, search for ClareHome, and download the skill.

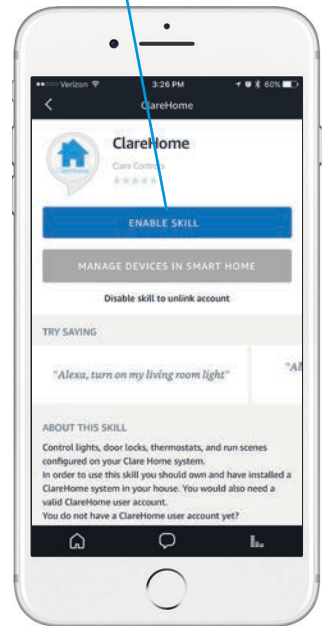
After downloading the Amazon Alexa App, tap on the menu icon and then on Skills.



Next, search for and download the ClareHome skill



Tap enable skill to activate the ClareHome Alexa skill.



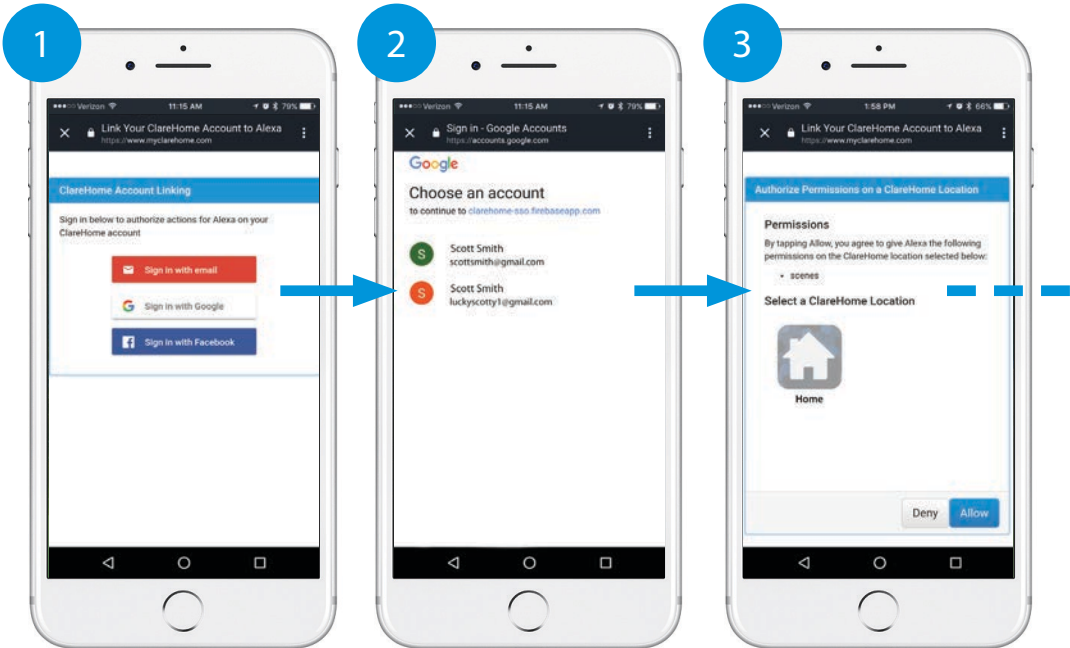
Note: You'll need to create an Amazon account if one hasn't previously been created.

Enabling the ClareHome skill gives Alexa control over your smart home devices.

Note: Downloading and installing the ClareHome skill is required to use Amazon Alexa with your Clare smart home. Amazon Echo and Echo Dot both support full voice control of your smart home devices.

Authorizing ClareHome and Discovering Smart Home Devices

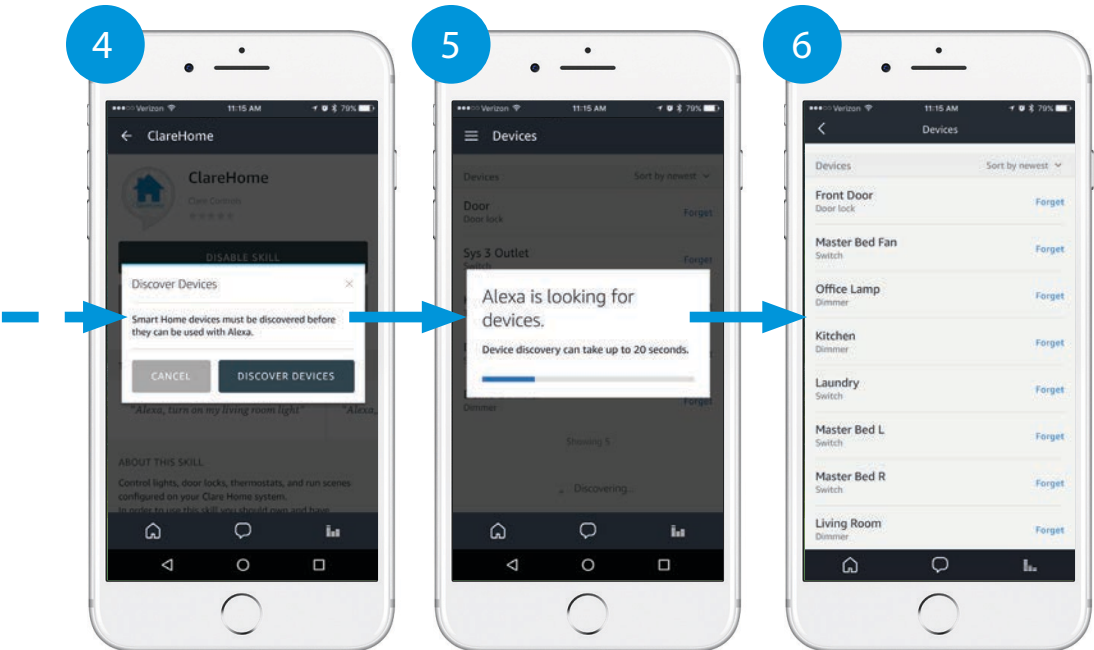
After installing the skill, you'll need to authenticate your Clare smart home by signing in with your ClareHome account information. If you have more than one system, you will need to choose which location you wish to enable Alexa voice control.



Sign into your ClareHome account (Email, Google, or Facebook)

If signing in using Google, select the appropriate account.

Next, select your desired ClareHome location and tap allow.



Follow the on-screen instructions to discover all supported smart home devices. Once this process is finished, a Device list appears showing all supported and installed devices. Device discovery generally does not take longer than 20 seconds.

Using Alexa to Control ClareHome



Currently, Alexa and ClareHome supports control of lights, locks, thermostats, and Scenes. Below is a list of the supported devices and a list of phrases that can be dictated to control each device. **Note:** Each phrase needs to be spoken to Alexa using the correct phrasing. Refer to the supported phrases below to learn more.

| List of Supported Devices | Supported Alexa Phrases |
|---------------------------|---|
| <u>Thermostats</u> | <div>"Alexa, set my (thermostat name) to 72 degrees."</div> <div>"Alexa, increase the temperature by 5 degrees."</div> <div>"Alexa, decrease the temperature by 3 degrees."</div> <div>"Alexa, turn down my (thermostat name)." <small>(Automatically adjusts temperature by 2 degrees)</small></div> <div>"Alexa, cool down/heat up the (thermostat name)."</div> <div>"Alexa, what is the (thermostat name) temperature?"</div> |
| <u>Lighting</u> | <div>"Alexa, turn on my (light name)."</div> <div>"Alexa, turn off my (light name)."</div> <div>"Alexa, set my (light name) dimmer to 50 percent."</div> <div>"Alexa, turn on my (light name) dimmer to 10 percent."</div> <div>"Alexa, is my kitchen light on?"</div> |
| <u>Door Locks</u> | <div>"Alexa, lock my (door lock name)."</div> <div>"Alexa, is my (door lock name) locked?"</div> <div>"Alexa, is my (door lock name) unlocked?"</div> |
| <u>Scenes</u> | <div>"Alexa, turn on (scene name)."</div> <div><u>Examples of Scene phrases:</u><div>"Alexa, turn on Good Morning."</div><div>"Alexa, turn on Good Night."</div><div>"Alexa, turn on Movie Time."</div><div>"Alexa, turn on Vacation."</div></div> |



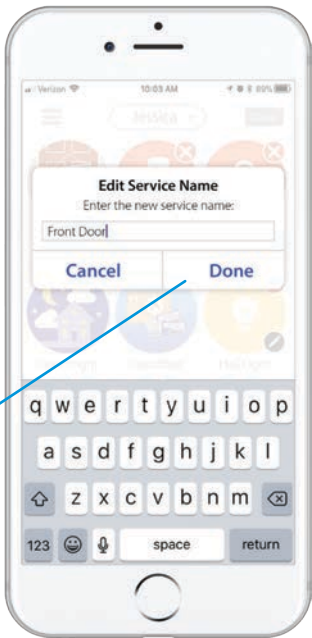
Note: Alexa + ClareHome supports control over security systems, audio, entertainment, and more, ONLY if these devices are included in a ClareHome scene. Scenes may be created from the ClareHome App. Advanced Scenes must be created by an authorized Clare dealer.

Renaming Smart Home Devices to Work with Alexa

Alexa may not be able to control devices if: the device is labeled with letters or initials, two devices have the same name, or when a device is labeled as one word instead of two. Refer to the chart below for examples of what device names may not be supported. To change the name of a device, simply open the ClareHome App, tap and hold on any device until the edit button appears, and then tap on the edit button to rename the device.

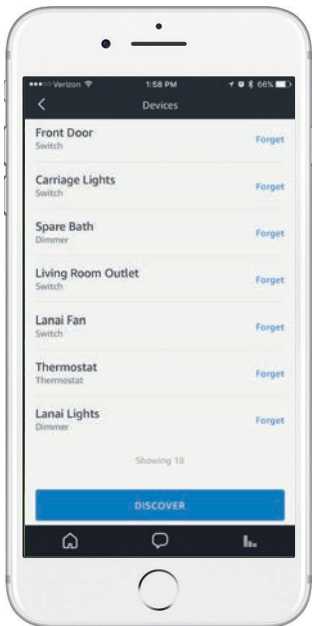


Tap the edit button to change the name of any device.



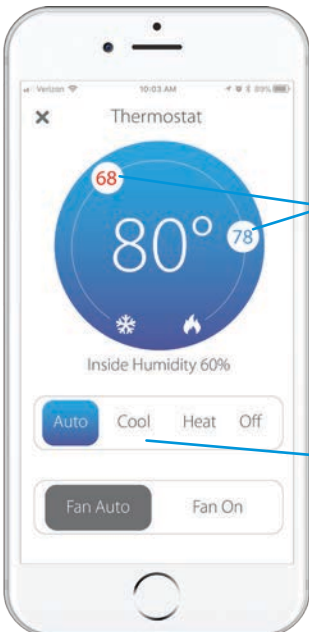
Type a new name for the device, and then tap Done.

You must rediscover devices in the Amazon Alexa App for the new device name to be recognized.



| Examples of Unsupported Device Names | Examples of Suggested Device Names |
|--------------------------------------|------------------------------------|
| Goodnight | Good Night |
| Light L1BR | Bedroom |
| 2 Devices named Front Door | Front Door Lock, Front Door Light |
| MBR Light | Master Bedroom Light |
| F.D. Dimmer | Front Door Dimmer |
| Welcomehome | Welcome Home |

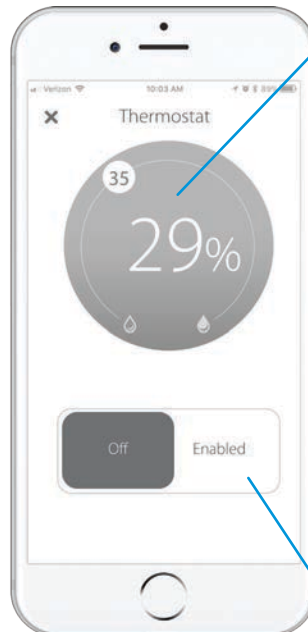
Using Thermostat Controls



Choose the heat and cool set points for your thermostat.

Cycle between functions on your HVAC system.

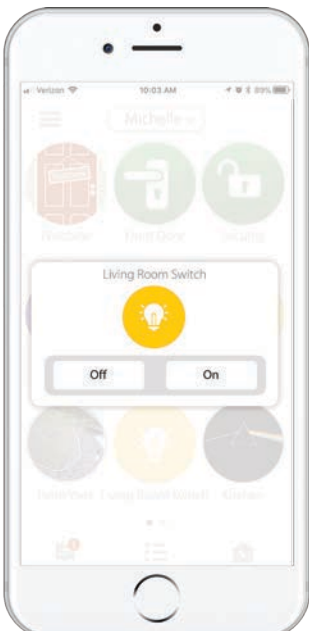
The ClareHome HVAC controls make adjusting the temperature of your home as easy as possible.



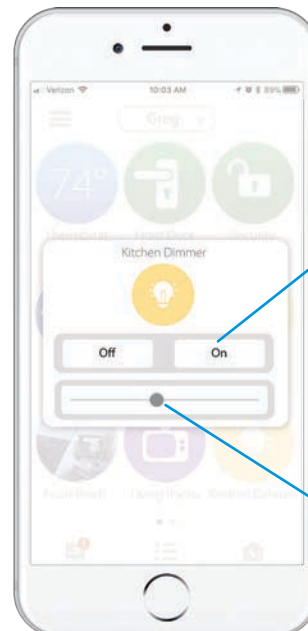
Set your desired humidity level. If your thermostat/humidistat supports this feature.

Enable or disable your humidistat.

Using Lighting Controls



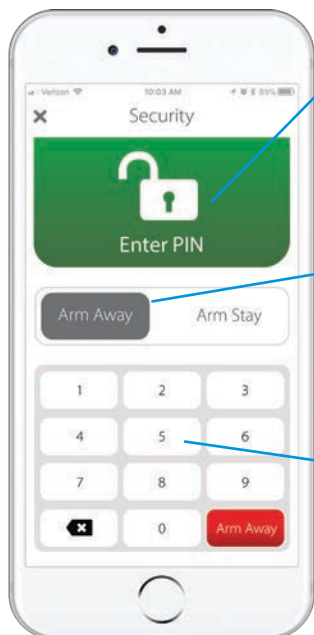
The status of your light is viewable for smart switches, dimmers, receptacles, and even ceiling fans.



If wanting to turn on your dimmer to 100% brightness, simply tap On.

The dimming level of your light is displayed by color and by ramp level.

Using Security Controls

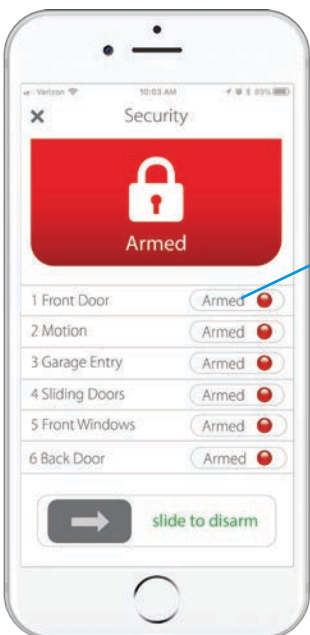


Security system status is displayed by color and by the icon.

Select between Arm Away and Arm Stay modes.

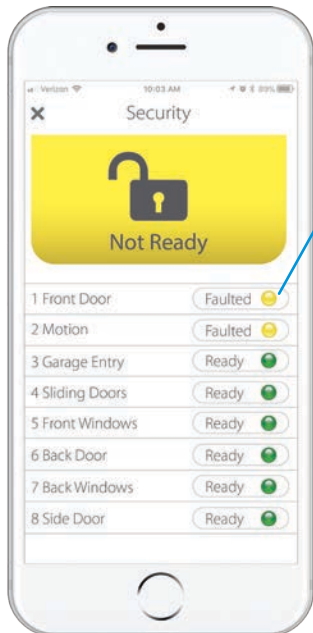
The number pad allows arming and disarming with your security pin code.

The ClareHome App supports armed stay, armed away, disarm, and faulted statuses.



Easily check the status of individual zones of your home.

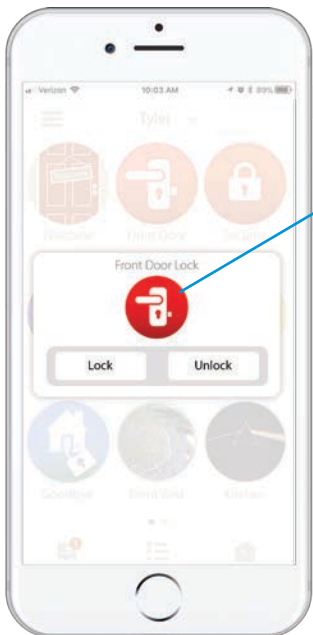
In this image, you can see the home is set to Arm Away and all of the zones are armed.



In this example you can see the front door is open and the motion sensor is tripped. The security system cannot be armed when a zone is open or faulted.

Note: When a window, door, motion sensor, or zone is open or tripped, ClareHome will display the zones as faulted and the system as not ready.

Using Door Lock Controls



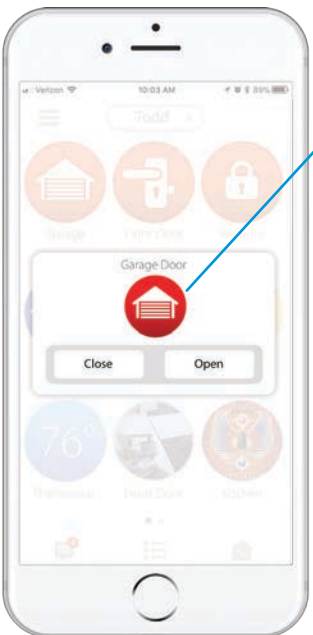
View status or control door locks installed in your home.



Note: Controllable door locks can increase safety and are extremely handy when giving access to friends and family.

Easily lock or unlock your connected door locks with a single tap.

Using Garage Door Controls

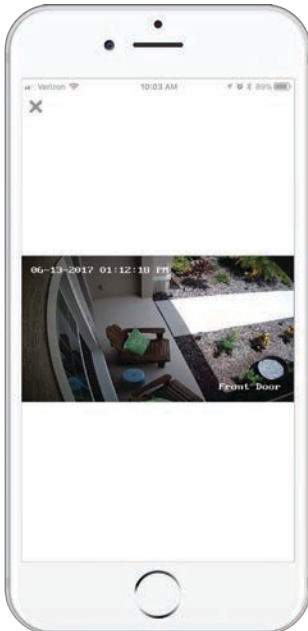


View status or control your garage door from home or away.

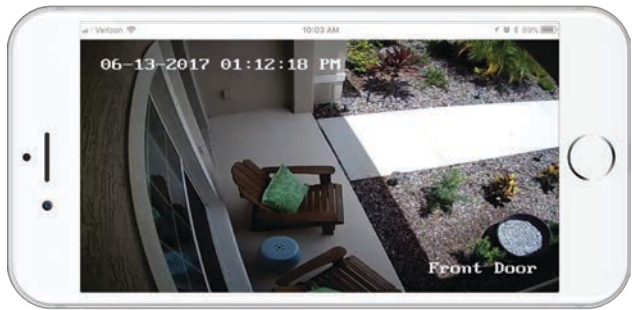


Have you ever left home and forgot whether or not you left the garage door open? Rest assured with ClareHome.

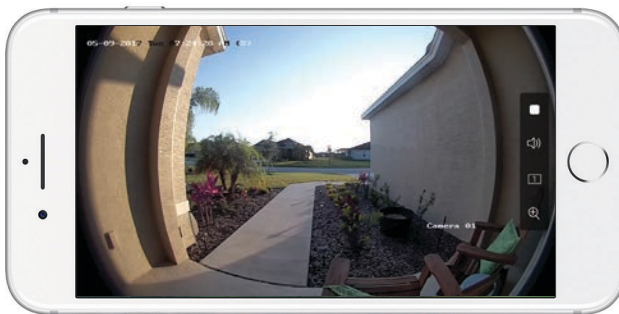
Viewing Security Cameras and The Clare Video Doorbell



View cameras installed in and around your home.



Note: ClareHome currently supports live view only of connected security cameras. Download the ClareVision Plus App for complete control including access to recorded video, notifications, and more.



The Clare Video Doorbell as seen from the ClareVision Plus App.



Note: ClareVision Plus is available for all iOS and Android Devices.

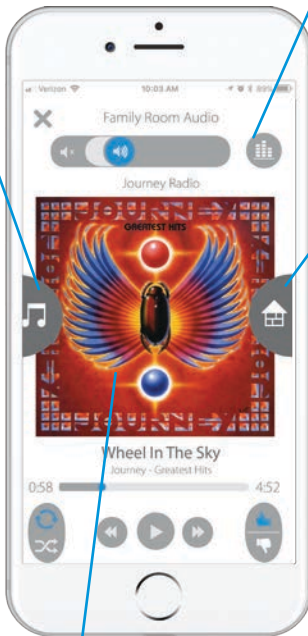


Using Audio Controls

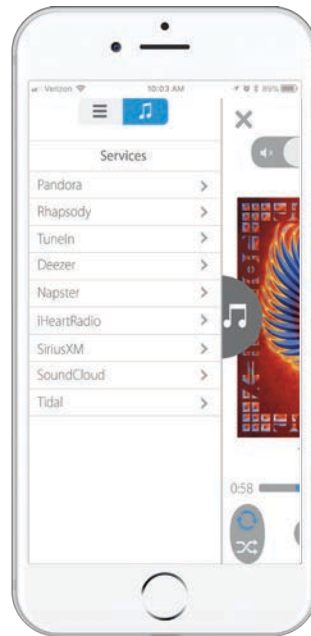
Set the perfect mood in your home by controlling the music you love from the ClareHome App. Seamlessly manage all of your audio sources including your favorite streaming services. Monitor the volume level one room at a time or all at once by grouping audio zones.

Tap this button to access your audio sources.

Tap this icon to change the volume of individual zones or grouped audio.



Enjoy music throughout your home by grouping rooms of audio.



ClareHome is compatible with a wide range of streaming services.

ClareHome displays album artwork of the current playing track.



Note: The snapshot view depicts the current playing audio album artwork as well as artist and track metadata. Easily see what music is playing in any room.

Using Entertainment Controls

The ClareHome App gives you control over one or more entertainment systems in your home. Whether you want adjust the volume on the TV in the family room or change the channel on your DirectTV box, ClareHome puts you in complete control.

Toggle between available input sources. For example, switch between a blu-ray player and an Apple TV.

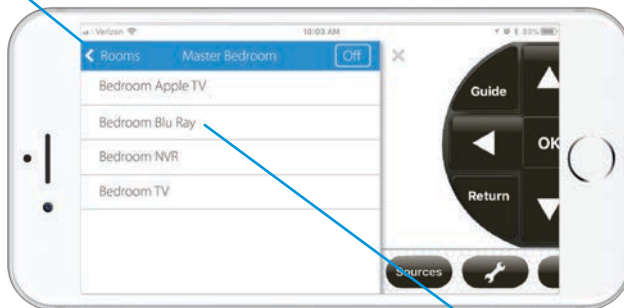


Directional pad works the same way as your standard remote.

The entertainment tool bar allows simple control over input sources, device settings, favorites, and volume level.

← If the source supports it, swipe the screen left or right to access additional entertainment controls and settings. →

Select the location of the entertainment device you wish to control.



Next, select the specific entertainment device you want to use.

Note: ClareHome supports entertainment devices that use IP or IR commands. Easily control TVs, streaming media players, blu-ray players, cable boxes, surround sound receivers and more!



ClareHome Benefits



Support

ClareCare support is here to help.
Chat, call, or email.
941.315.2273 (CARE)
help@clarecontrols.com



Warranty

All Clare brand products are covered under a three year manufacturer's warranty from the date of activation.



Savings

With our smart energy options, start saving on your utility bill now. Reduce your usage and increase savings with Clare.



Control

Stay in total control of your smart home and account with myClareHome. Purchase products that can be installed in minutes.



Insurance

You may be eligible for discounts on your homeowners insurance. Contact your provider for more information.



Flexibility

Clare works with leading brands in the smart home industry to support the products you like and use.

Notes: Websites, User Names, and Passwords

Internet and Wi-Fi Information

Website: _____

User Name: _____

Password: _____

Notes: _____

ClareHome Account Information

Website: _____

User Name: _____

Password: _____

Notes: _____

ClareVision Plus Account Information

Website: _____

User Name: _____

Password: _____

Notes: _____

Thermostat Account Information

Website: _____

User Name: _____

Password: _____

Notes: _____

Security System Account Information

Website: _____

User Name: _____

Password: _____

Notes: _____

Garage Door Account Information

Website: _____

User Name: _____

Password: _____

Notes: _____

Music Account Information

Website: _____

User Name: _____

Password: _____

Notes: _____

Music Streaming Services Account Information

Website: _____

User Name: _____

Password: _____

Notes: _____

Notes: Websites, User Names, and Passwords

Music Streaming Services Account Information

Website: _____

User Name: _____

Password: _____

Notes: _____

Music Streaming Services Account Information

Website: _____

User Name: _____

Password: _____

Notes: _____

Other Account Information

Website: _____

User Name: _____

Password: _____

Notes: _____

Other Account Information

Website: _____

User Name: _____

Password: _____

Notes: _____

Other Account Information

Website: _____

User Name: _____

Password: _____

Notes: _____

Other Account Information

Website: _____

User Name: _____

Password: _____

Notes: _____

Other Account Information

Website: _____

User Name: _____

Password: _____

Notes: _____

Other Account Information

Website: _____

User Name: _____

Password: _____

Notes: _____

Follow us on Social Media

