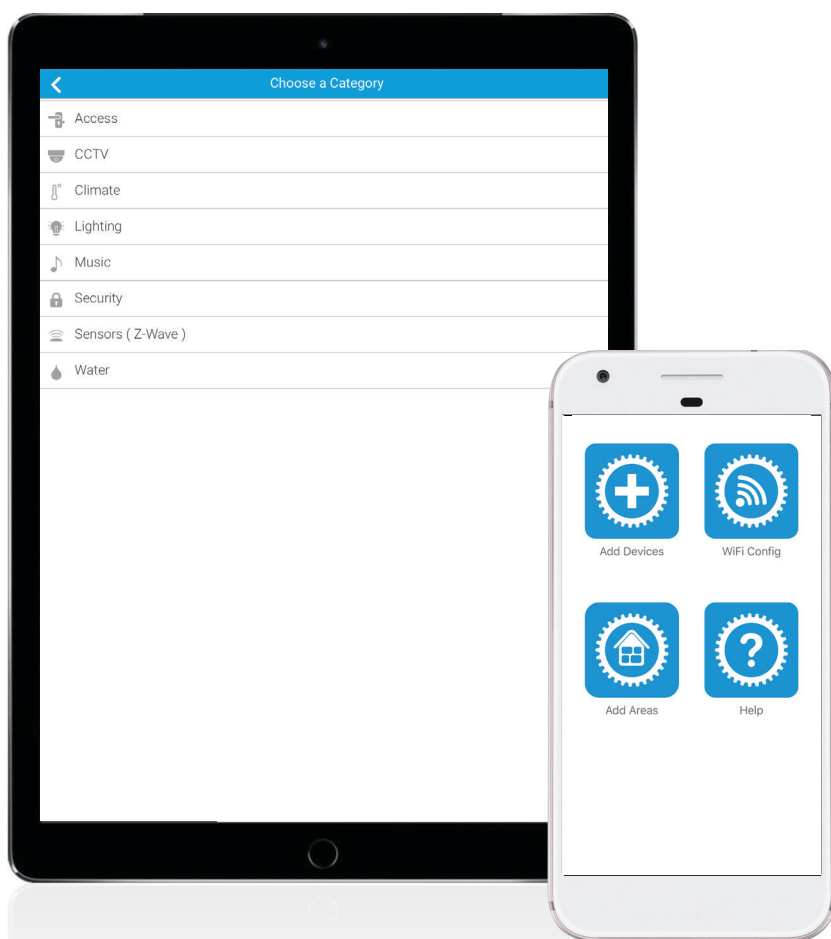
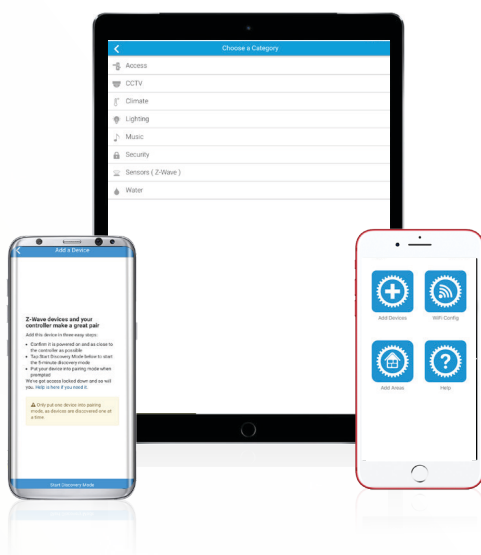


Understanding The Install Assist App



clare™





Available for iOS and Android devices, the Install Assist App lets installers pair and program devices with or without a network connection. Install and setup security systems, lights, locks, thermostats, Z-Wave devices and more in minutes using Install Assist.



Configure Clare's CLIQ.mini controller to any 2.4GHz Wi-Fi network without a laptop or access to the Fusion Configuration Tool.



Pair and configure security panels, sensors, and keypads in minutes using Install Assist's simple guided process.



Add lighting, sensors, and other Z-Wave devices to any ClareHome project, with or without a home network.



Easily configure additional settings of any device. You can even make master/accessory associations for 3- or 4-way lighting applications!



Download Install Assist for iOS and Android devices

clarecontrols™

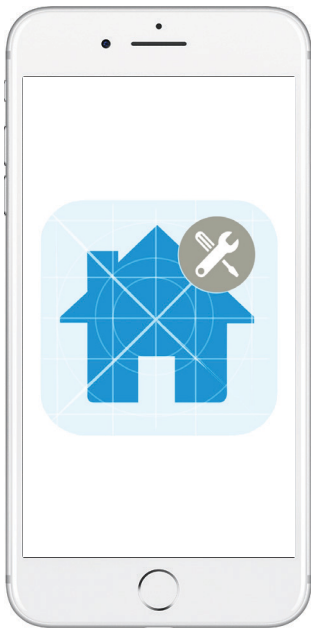
nest

RESOLUTION
Security Uncontained

Honeywell

Install Assist's Main Menu

Introducing Clare's Install Assist App – a simplified way for installers to pair, program, and turn-up ClareHome automation systems quickly without a laptop or access to the Fusion Configuration Tool.



Install Assist's main menu is split into 4 main categories - adding devices, Wi-Fi configuration, adding areas, and help.

The Add Devices button gives installers the ability to add additional devices to an existing project, or configure settings for any already installed device.

The WiFi Config button allows simple and quick set up of a CLIQ.mini controller on any 2.4 GHz Wi-Fi network.



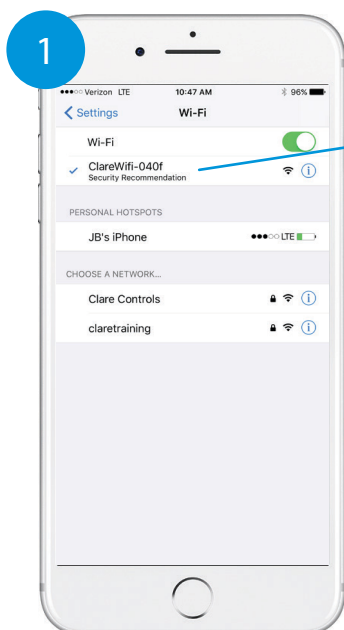
Tap the Add Areas button to easily add an area to an existing project so devices can be organized by room or location.

Access the Install Assist Help section for answers to many frequently asked questions.

Note: *Install Assist is a tool designed for installers to add popular devices, such as lighting, security, Z-Wave devices, and more. More complicated projects including robust multi-room audio or entertainment must be programmed using Clare's Fusion Configuration Tool.*

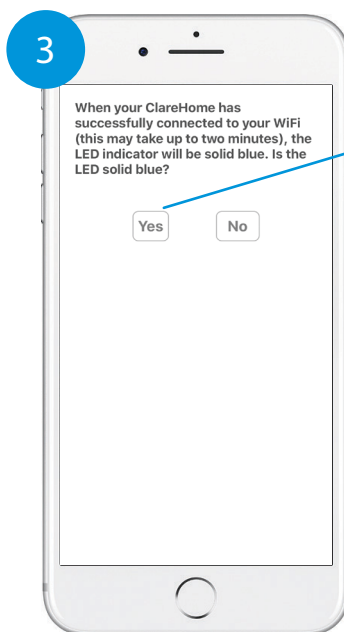
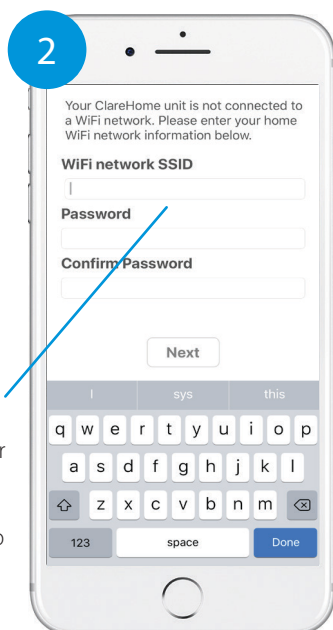
Setting up a CLIQ.mini Controller on Wi-Fi with Install Assist

Clare's CLIQ.mini can be configured to operate on Wi-Fi using Install Assist. To get started, make sure the CLIQ.mini is in AP mode, and then follow the below instructions for connecting to your Wi-Fi network. The CLIQ.mini automatically enters AP mode after booting and the LED indicator light flashes red.



The CLIQ.mini will broadcast it's own SSID network. First, connect your phone to this network.

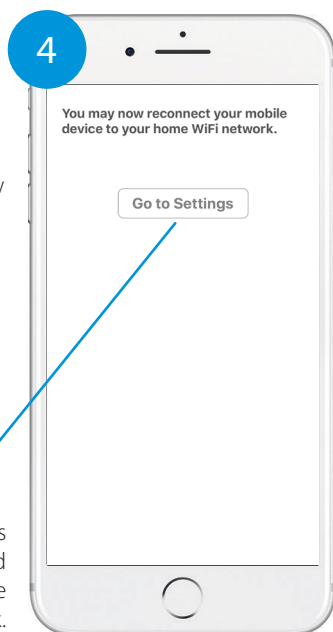
Toggle back to the Install Assist App, tap the WiFi Config button and then enter the credentials for the network you wish to connect the CLIQ.mini. Tap Next.



Verify that the LED light on the CLIQ.mini has turned blue. If it has, then your controller is now online. Tap Yes.

If the LED is not blue, tap No, and follow the CLIQ.mini reset instructions.

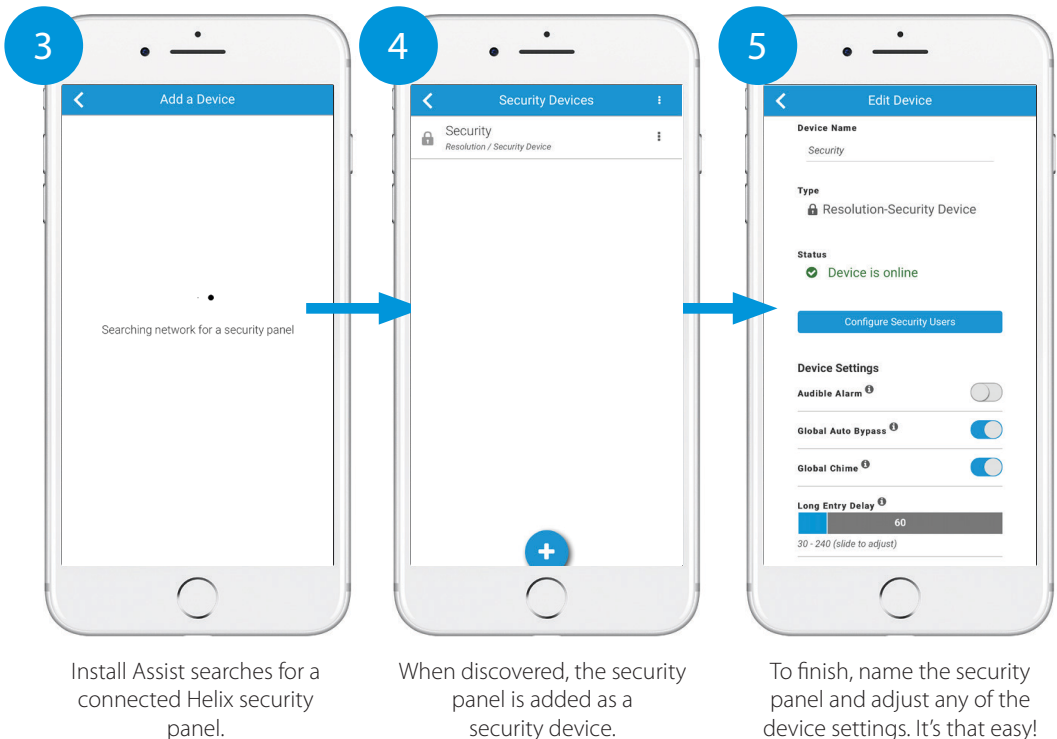
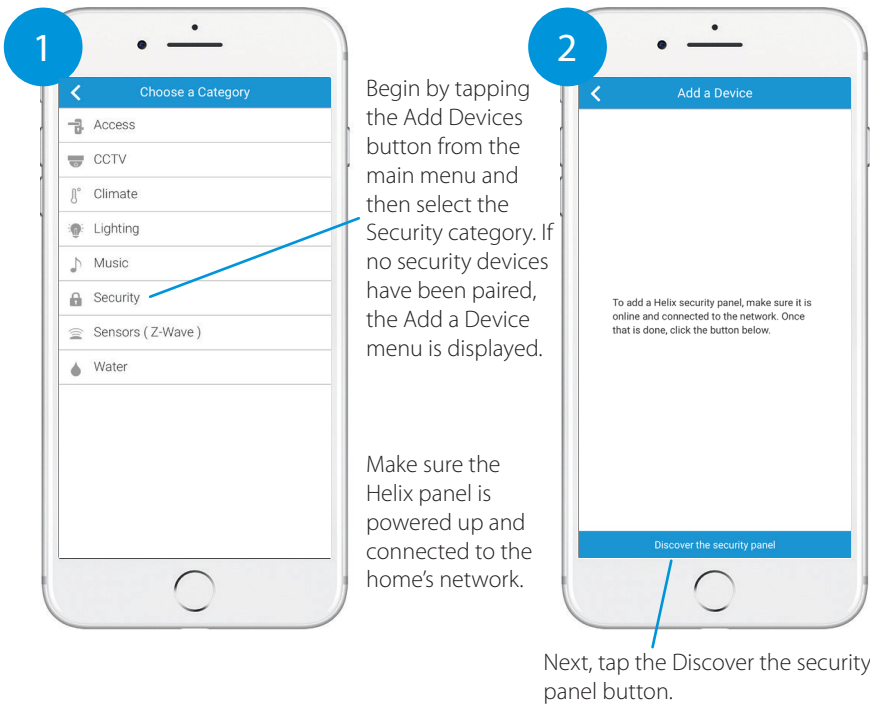
Your CLIQ.mini is now online and connected to the home network.



Note: The CLIQ.mini may also be hardwired with an ethernet cable for connection to a network. Install Assist only supports Wi-Fi setup of the CLIQ.mini controller. Please refer to the CLIQ.mini quick start guide for further installation and setup assistance when hardwiring your controller.

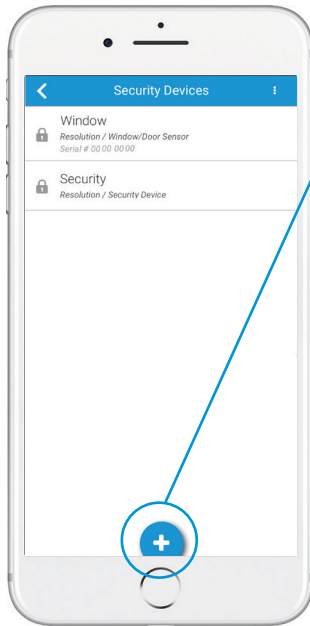
Setting up a Helix Security Panel

Install, pair, and configure Helix security panels in minutes using the Install Assist App. You can even pair security keypads from the App. Smart security has never been easier and faster to install!

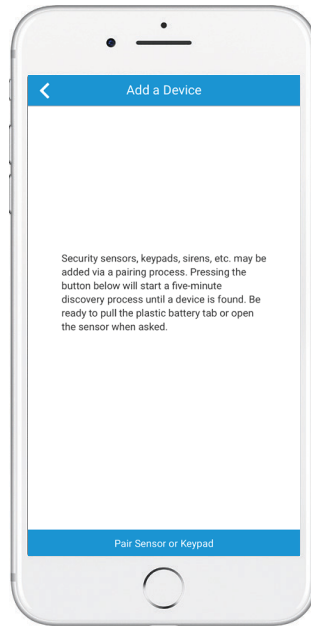


Configuring Security Sensors, Motion, and More

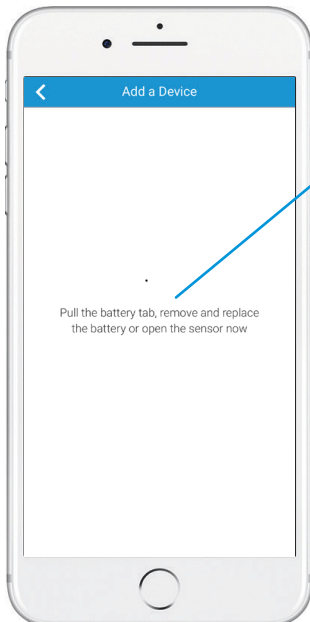
After pairing and configuring the Resolution Helix security panel, easily add additional motion sensors, door/window sensors, or keypads to any ClareHome project.



Begin by tapping the Add Devices button from the main menu, and then select the Security category. Tap the blue + icon located at the bottom of the App to add security devices.

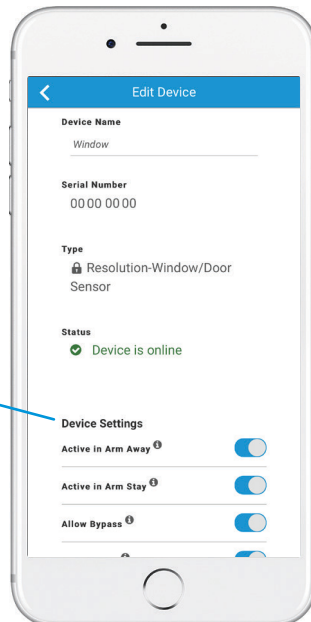


Next, follow the on-screen instructions and tap the button labeled Pair Sensor or Keypad. Doing so starts a 5 minute discovery process.



After tapping Pair Sensor or Keypad, remove the device's battery tab and replace the battery or open the sensor cover to complete the pairing process.

After the device is paired, the Edit Device screen displays. Modify the name of the device, or edit any device settings.

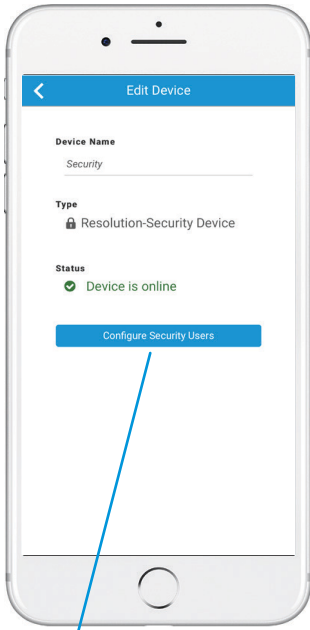


Repeat this process to add each security sensor or keypad.

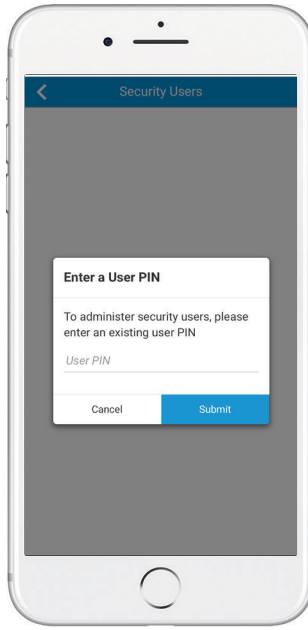
Adding Users to a Helix Security System

Install Assist also supports adding or removing users and PIN codes when using a Helix security panel. User names including the master user and PIN codes can be edited from the edit devices menu.

Start by selecting the security system from the devices screen.

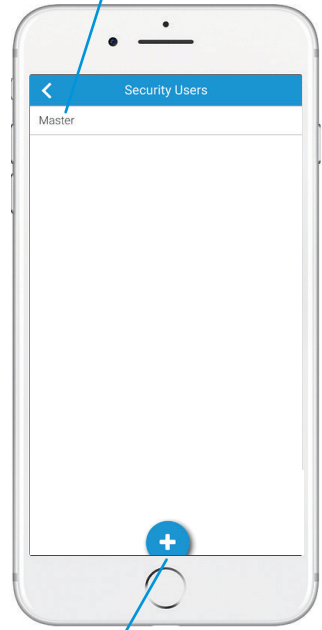


Next, tap on the Configure Security Users button to modify users and PIN codes.

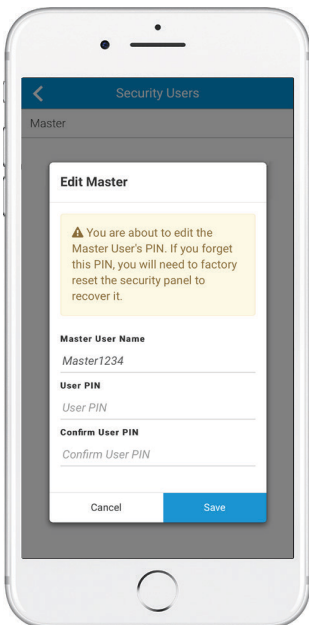


Then, confirm your PIN code.

From the Security Users menu, tap any user to edit their name or PIN code.

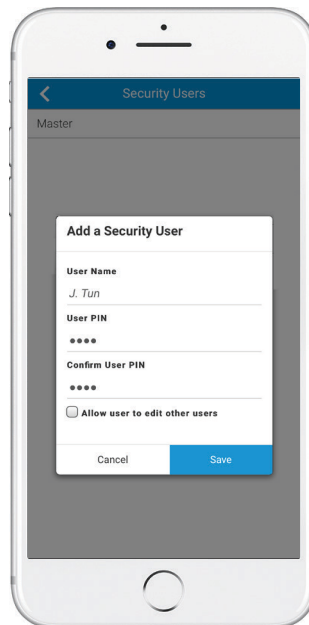


Tap the + icon to add a new security user.



To edit the master user code, simply enter a new pin code and verify. Tap Save to finish.

NOTE: If the master user PIN code is forgotten, you will need to factory default the panel to restore.

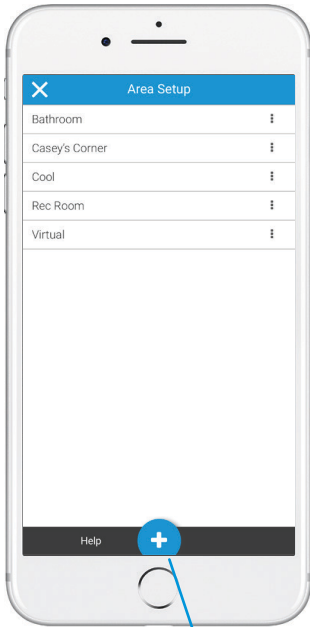


Creating a new user is just as simple. Enter a user name, and assign a PIN code. After confirming the PIN code, tap Save to finish.

Adding Areas Using Install Assist

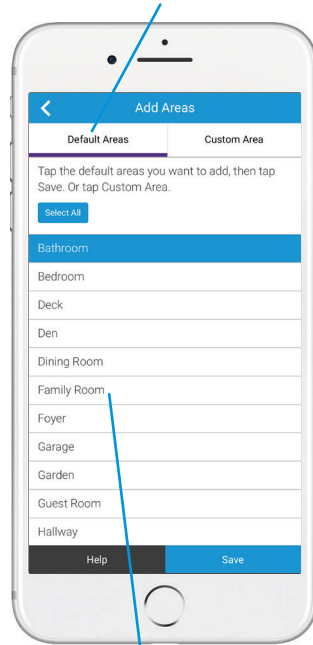
Using Install Assist, installers or homeowners can quickly access devices in a certain location by adding an area. Areas can be added quickly in just a few steps.

First, tap on the Add Areas button from the Install Assist main menu.

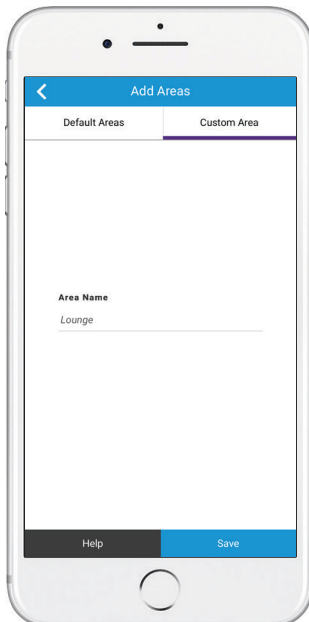


Then, tap on an existing area to edit, or the + icon to add a new area.

Easily select from a list of default areas or create a custom area.



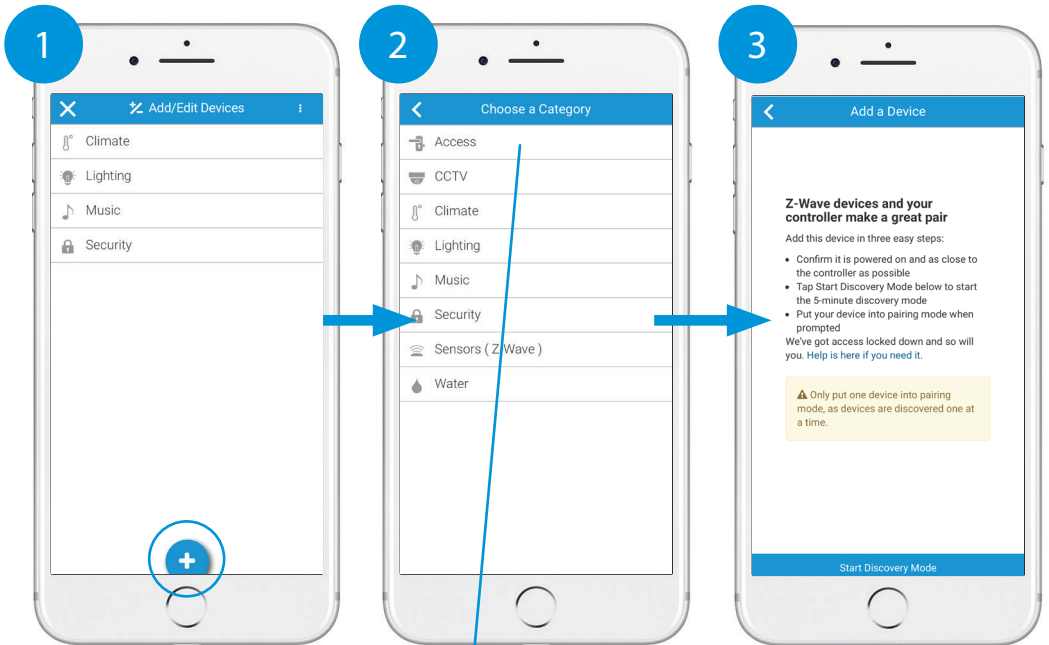
Select the default areas you want to add and tap Save.



Add a custom area by typing your preferred name, and then tapping Save.

Adding Devices with Install Assist

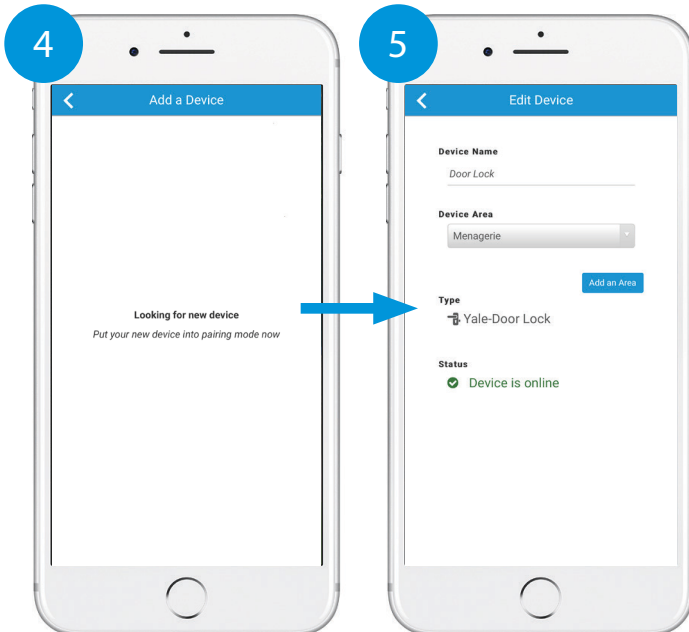
Adding smart home devices with the Install Assist App is quick and simple. Select a device category, start discovery mode, and pair your new device. It's that easy! Install Assist supports door locks, garage door modules, ClareVue lighting, Z-Wave products, thermostats, and Helix security.



Tap the Add Devices button from the main menu, then tap the + icon to add a device.

Next, select the appropriate category for the device you're going to add.

Make sure the device you wish to add is powered on, and in close proximity to the CLIQ controller. Tap Start Discovery Mode.



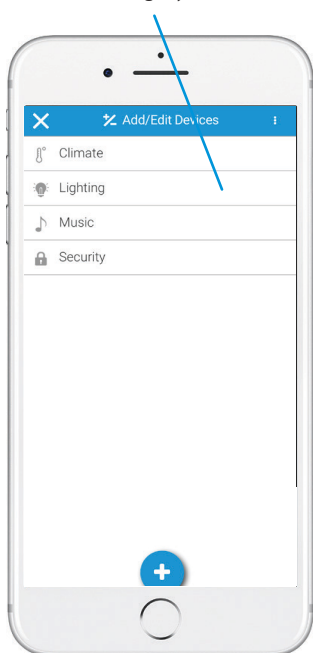
After the controller is put into discovery mode, push the pairing button on your device.

Once paired, name the device, assign it to a location, or edit device settings.

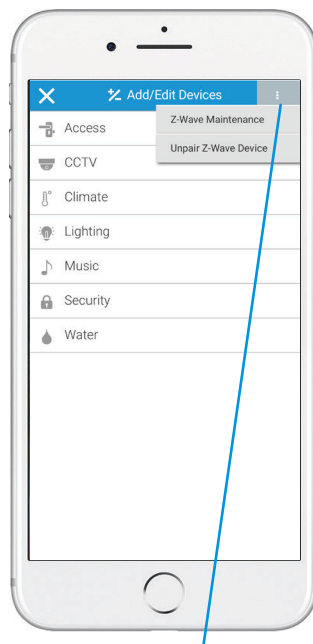
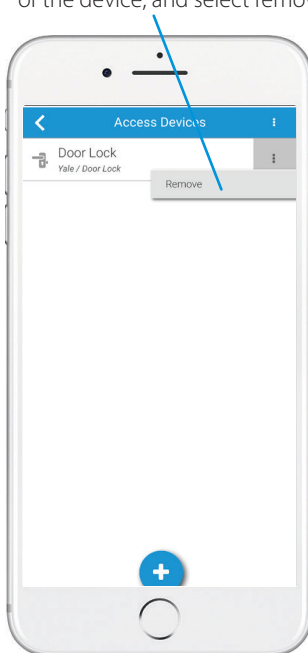
Configuring, Modifying, or Removing Devices

From the Device menu, easily view the online status, rename devices, and even modify advanced settings for devices.

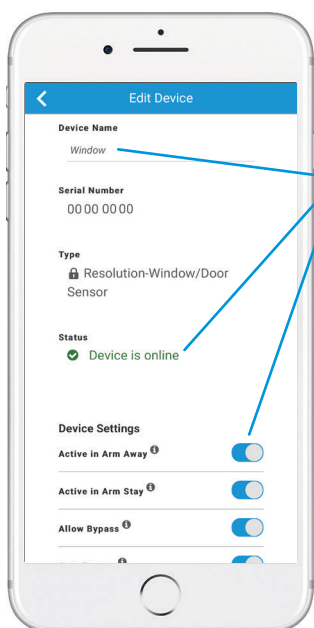
To remove a device, first, tap on a device category.



After selecting an individual device, tap the 3 dots to the right of the device, and select remove.



To unpair Z-Wave devices, tap the 3 dots to the right of the device and then tap Unpair Z-Wave Device. Follow the on-screen instructions to unpair the device from the ClareHome project.



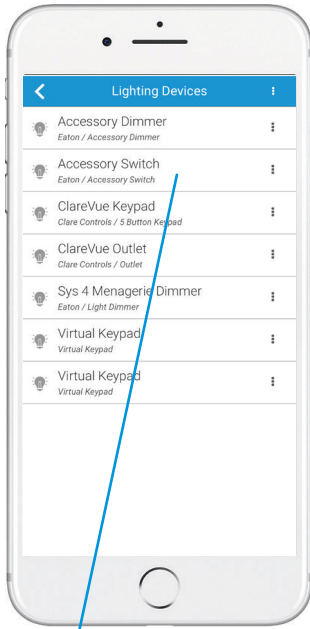
You may also tap on the device's name to view or modify advanced settings for that device. You may rename the device, view the online status, or edit additional properties.

Note: Some devices have a set of unique settings that can be changed and modified.

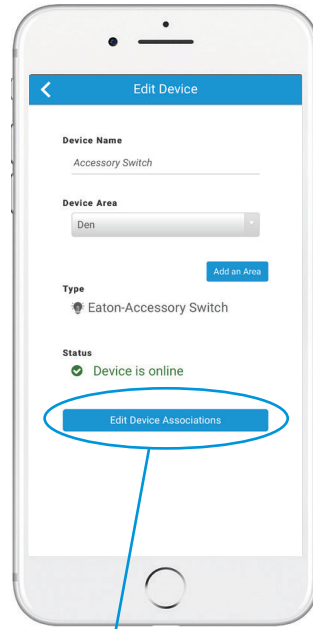
ClareVue Lighting: Master & Accessory Associations

In most homes, there is at least one light controlled by two separate switches. Whenever you flip either switch, the light is controlled. Install Assist makes it simple to link both of these switches or dimmers to control the same light.

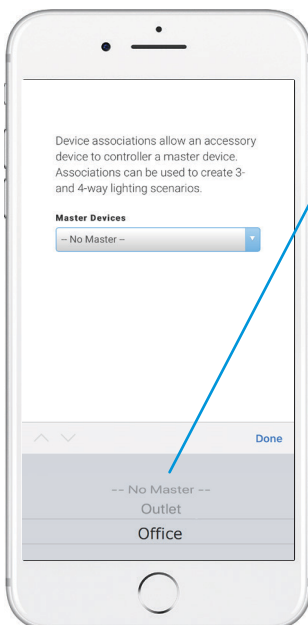
Make sure you have already paired both the master and accessory light switches or dimmers that will be associated.



Tap the Add Devices button from the main menu, and then tap on the Lighting Devices category.



From the Edit Devices menu of the accessory device, tap on the button labeled Edit Device Associations.



Select the drop-down menu to view a list of master devices that can be associated. Make the association to the accessory device by selecting a master device and then tap Done.

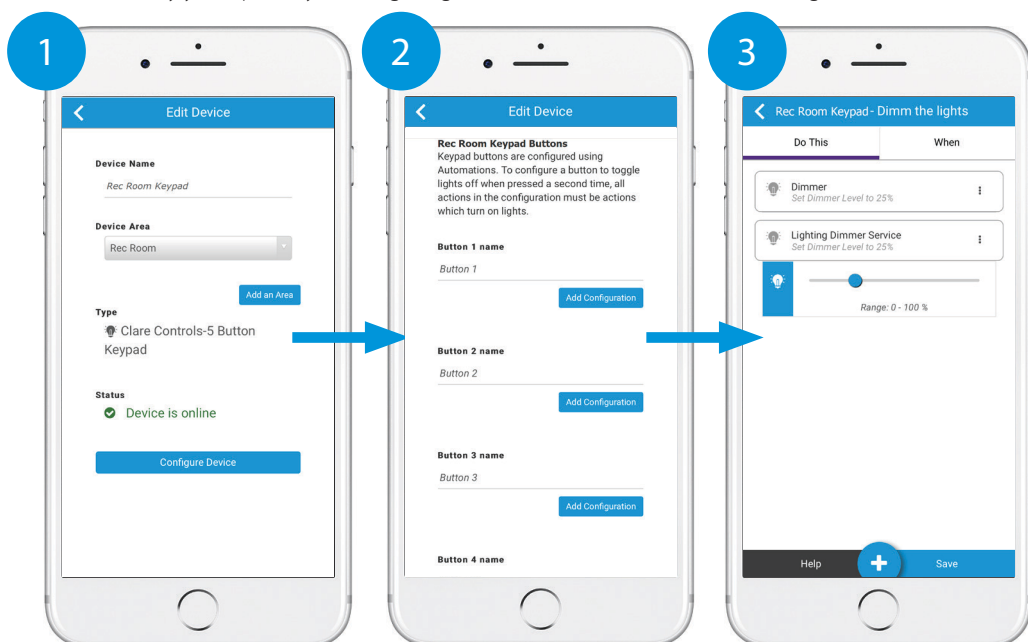
You may associate up to three accessory switches or dimmers to any master device.

Note: Install Assist supports association of both ClareVue Lighting switches and dimmers. A dimmer cannot be associated with a switch or visa versa.

- ✓ Master Switch -----> Accessory Switch(es)
- ✓ Master Dimmer -----> Accessory Dimmer(s)
- ✗ Master Switch -----> Accessory Dimmer(s)
- ✗ Master Dimmer -----> Accessory Switch(es)

Configuring Lighting Keypads with Install Assist

You can pair and configure ClareVue lighting keypads using Install Assist. Simply pair the keypad the same way you'd pair any other lighting device, name each button, and configure its function.



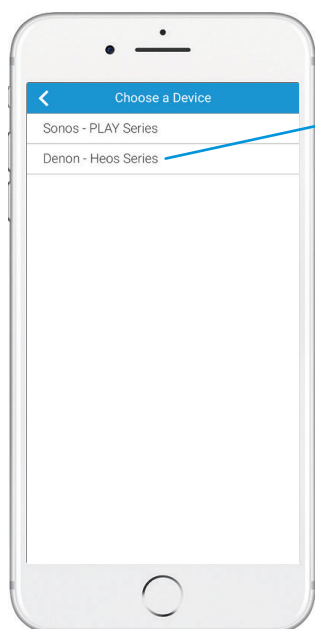
First, pair the device, assign a name, and add it to an area. Tap Configure Device.

Assign a name to each button and tap Add Configuration.

Finally, choose an action(s) for each button and tap Save.

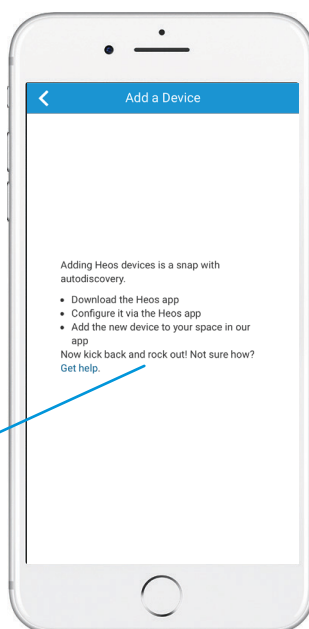
Auto-Discovered Devices

Some devices already connected to the home's network (hardwired, Wi-Fi, or Z-Wave connected), will be automatically discovered in the Install Assist and ClareHome Apps with no configuration required. In this example, there's a Denon audio product and a few cameras installed in the home prior to the Install Assist Setup.



Devices and device categories are automatically added when devices are auto-discovered.

No pairing or configuration is required for auto-discovered devices. Edit the device's name or advanced settings.



Note: Auto-discovery in the Install Assist App is supported for the following devices:

All ClareVision Plus cameras, Denon HEOS and Sonos audio devices, and all Clare Controls thermostats.

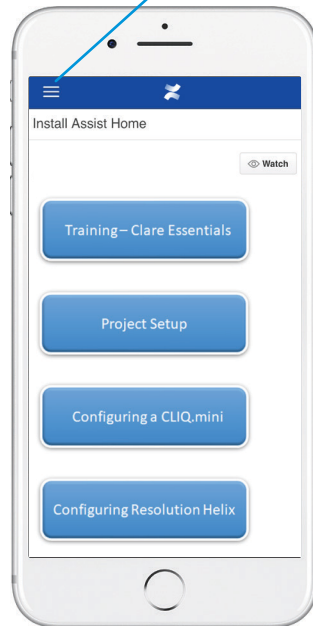
Accessing and Using the Help Menu

Still have questions about how to use the Install Assist mobile App? Check out the help section in the App. Simply tap the Help button from the app's main menu and find answers to many common questions. NOTE: The Install Assist Help section is only available if you are online.



Install Assist's main menu includes a Help section to assist with any questions you may have.

You can even access our complete knowledge base by clicking on the menu button in the top left corner.



From accessing our online training tools, to getting information on project setup or configuration, our help section is a great resource for all of your most important questions.

Note: Clare is committed to providing our installers with a streamlined approach to installing and programming smart home devices. If you have a specific request or would like to provide feedback, please reach out to our technical support team.

Notes

Follow us on Social Media

